

Using the KIP wideformat plotter

Download the driver from the design web site

<http://www.design.iastate.edu/PRINTERS>

Choose the KIP printer and download the windows driver

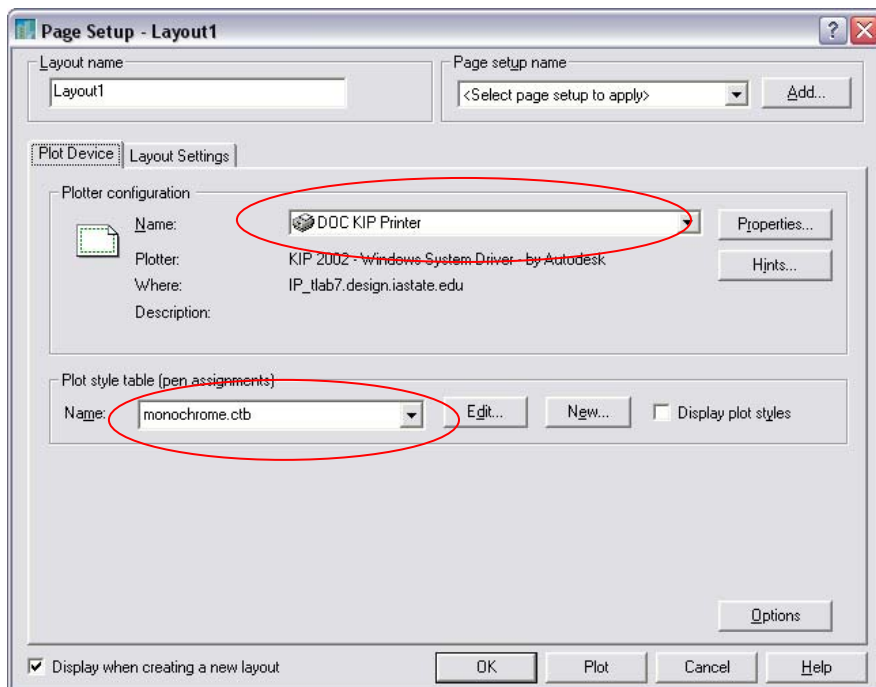
When this self-extracting ZIP file is run, it will install to c:\kip

Go to c:\kip and run setupKIP.cmd

This will install the driver and the appropriate port settings

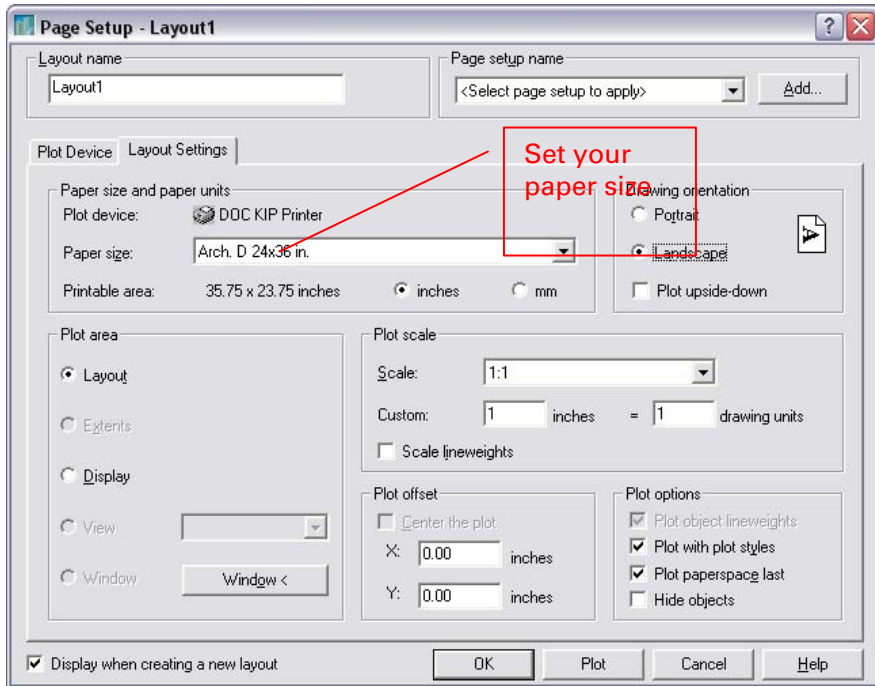
AUTOCAD Instructions

1. First, create a new layout
Insert/Layout/New Layout
It will ask you for a name in the command line. Call it KIP.
2. Click on the tab labeled KIP
3. In the Layout Tab, make sure the following settings are set



Note the MONOCROME Plot style settings...you will not like the drawing if it tries to figure out colors for you in grayscale!

4. In the Layout settings Tab, make sure the following settings are set



5. Now set your file in the layout window. When you are finished, you can click Plot again and settings should still look like the above settings. Click the Preview Buttons to make sure drawing is on the page correctly!
6. Click the plot button. Make sure you wait until the print manager (printer icon in the system tray) is empty. This will mean that your file has been sent.
7. Go to room 426 and tell them you are printing to the KIP printer.
8. WARNING....this is experimental and may or may not work. We are still in the testing phase.