

Using the ULS Laser cutter and Illustrator CS2

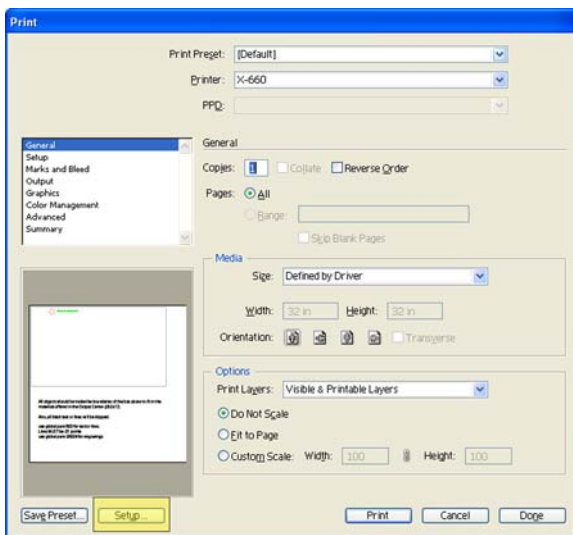
1. Start Illustrator
2. Click on “New From Template” and Choose **fullsheet.ait**

This will give you a template that has an outline of the effective cutting area. Apparently CS2 doesn't do very well with landscape type prints (which is what this is) so we have to trick it by creating a square layout then not using the bottom of the screen. There are several instructions and the outline is in black but don't worry, we “skip” the color black.

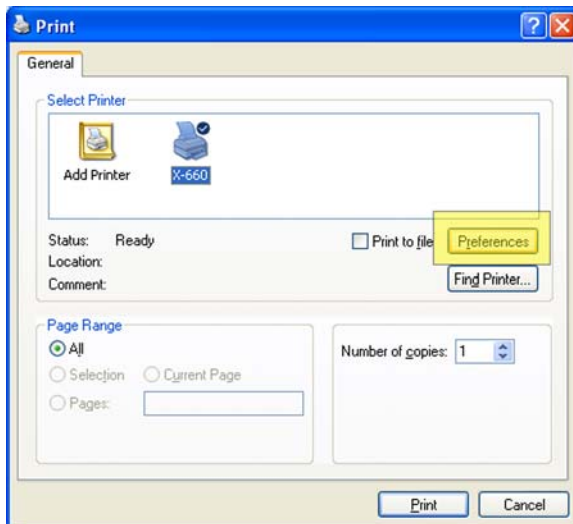
If you understand this concept and don't want to use the template file, you can set up your own file to be 32”x32”.

IMPORTANT: Cut lines are RED (.01 points) Engrave items are GREEN (NOT black)

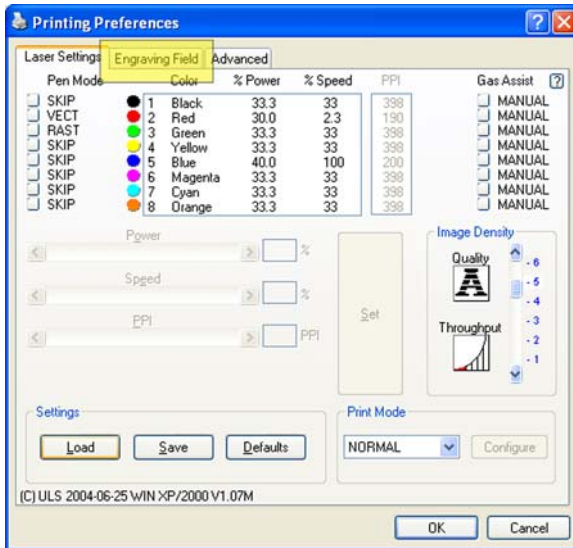
3. When you have your objects arranged on the screen, click “Print” from the File Menu.
4. Next, follow these steps to use the ULS printer driver
 - a. Click on the Setup button in the lower left corner of the print screen



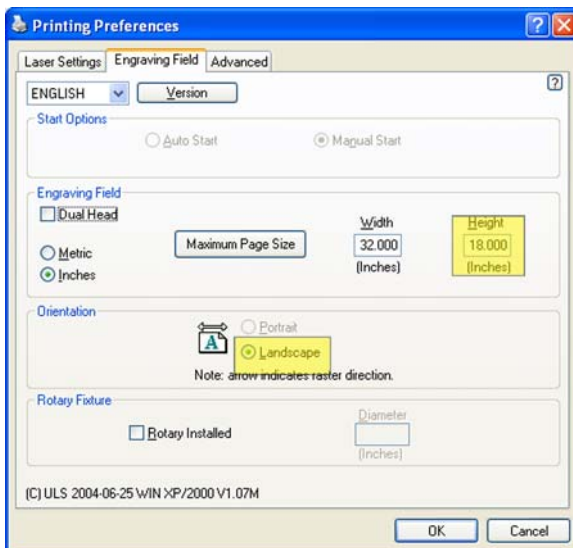
- b. Click on the Preferences button in this window



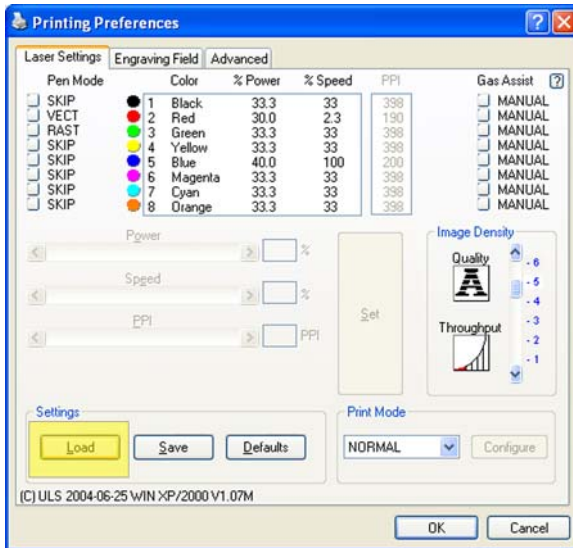
- c. Now you will see the printer driver window. The first thing you **MUST** do is set the engraving area and the direction of the raster engraving. Click on the tab labeled **Engraving Field**



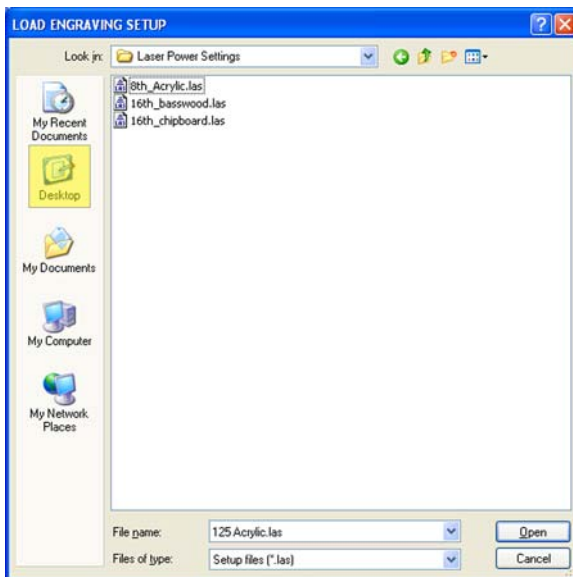
- d. Now we need to set the document size to match our illustrator document (even though it's bigger than the laser cutter field). So make sure that the **width=32** and the **height=32** and that the direction button for **landscape** is checked



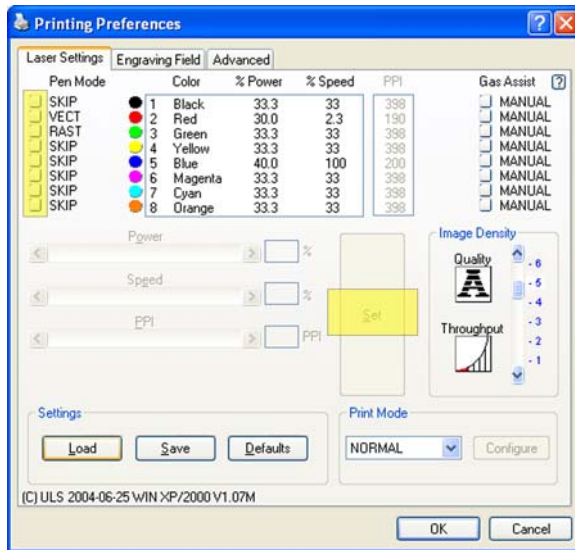
- e. Next we can go back to the **Laser Settings** tab and determine our materials. You do this by loading a file for an individual material. Click **Load** in the settings section



- f. The settings files are located on the desktop so click the **desktop button** on the left panel of this window and then open the **Laser Power Settings** folder. Now simply choose the type of material you are cutting.



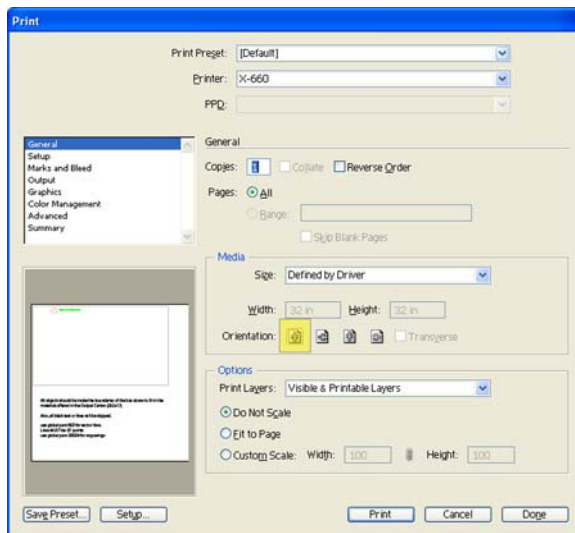
- g. If you need to skip a color or add another vector cutting color, you will do that through the settings interface. Click the paper icon in the left most panel to toggle VECT, RAST, VECT/RAST and SKIP. Don't use the VECT/RAST combination and please leave the black setting on SKIP (***this solves a lot of problems in AutoCAD and also allows the template to work so don't mess with it!***) To change the power and speed settings, click on the color and then change the settings in the slider bar. **IMPORTANT:** when you have made your changes, you must click SET in order for them to "stick" **DO NOT** click the save button! When you are finished, click **OK**.



WARNING:

This laser is very powerful so be VERY careful if you change any settings. We have tested these settings on the materials we supply and know they work. If you make any changes, please make sure that you know what you are doing or you could cause a fire!

- h. The final step is to make sure that Illustrator knows that you are printing this as a "portrait". It will often default back to landscape after the printer driver so just set the Portrait Button and you are ready to click PRINT!



5. Now we are ready to move over to the laser cutter and begin your plot. Please see "Setting up the ULS laser" sheet for the next steps.