



Architecture

The Study of Architecture

Architecture is a cultural phenomenon arising from the aspirations that individuals and groups have for their quality of life and the environment that supports it, and from the social enterprise of designing and building for the future. It involves individual and multiple buildings, the spaces within them, and the exterior landscape. Knowledge of architectural design, technology, and theory are brought together at Iowa State University in the study of architecture as a cultural discipline, encompassing diverse peoples, values, and needs for the world we inhabit.

Why are churches, schools, and courthouses designed and built the way they are?

How do we design energy-efficient homes that make use of solar energy?

Why do the Egyptian pyramids and other ancient structures mean so much to us?



In what ways do buildings, gardens and public spaces add beauty to our lives?

How do we design new buildings and renovate old ones so they are accessible to people with physical disabilities?

Can cities and towns be designed, instead of just "happening?"

If these questions interest you, consider studying the field of architecture.

IOWA STATE UNIVERSITY

Iowa's only professional architectural program is considered a "model program of exceptional strength," as noted by the National Architectural Accrediting Board. It was one of only three programs asked to represent American schools at the International Congress of Architecture in Barcelona (1996). Its faculty include recent winners of the Olympic Cultural Site Competition in Atlanta and the New York American Burial Site Competition, as well as finalists in the Oklahoma City Memorial Competition.



Architecture at Iowa State University
The Iowa State University Department of Architecture is a comprehensive center for teaching, research, and public service in architecture. Located in Ames, Iowa, the university enjoys the charm of a small town as well as the rich and complex urbanity of its neighbor, Des Moines. Architecture courses were first offered at Iowa State in 1914. Today, the department offers the only accredited, professional degrees in the state of Iowa.

The Department of Architecture is part of the College of Design and, together with the departments of Landscape Architecture, Art and Design, and Community and Regional Planning, forms a unique and innovative interdisciplinary environment. At all levels, the department is committed to the study of architecture as a cultural discipline in which issues of practice, of the social and environmental context in which buildings exist, and of environmental effects are combined with the subject matter of building design — construction, space, material, form, and use.

The Degree

Iowa State's Department of Architecture offers a five-year, undergraduate professional degree accredited by the National Architecture Accrediting Board. The department also offers the Master of Architecture degree and a post-professional graduate degree.

The Faculty

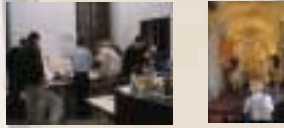
Student work is supported by 35 faculty members with diverse academic and professional backgrounds. Faculty are active in an array of research in architectural theory, urban design, computer technology, health facilities, housing, historic preservation, behavioral and environmental studies, universal design, and materials technology.

The Curriculum

The undergraduate curriculum is both an intense professional course of study and a broadly conceived experience in general education. The curriculum is composed of a one-year preprofessional program followed by a professional program that is typically four years in length. The first-year curriculum includes two required architecture courses: an introduction to architectural concepts and a design studio. Required general studies include math, physics, and English composition. These are supplemented with general studies electives.

At the end of the preprofessional year, admission to the professional program is based upon performance in the preprofessional program, the applicant's previous school record, portfolio and essay evaluations, and available departmental resources. Currently, 64 students are admitted to the professional sequence each year.

The professional curriculum follows a sequence of increasingly advanced involvement in the elements of the field of architecture: design; technology; history, theory, and criticism; human behavior; and design communication.



We seek to counter that sublimation of identity, satisfying the human desire



The design studio is a fundamental element of the undergraduate architecture program. From the beginning, students are involved in the construction, representation, and simulation of architecture. Extensive use is made not only of the design studio, but also the wood shop and the various computer laboratories. In addition to completing classroom projects, students regularly visit such cities as Chicago, Minneapolis, and Los Angeles. The average studio size is 16 students, offering them the opportunity for close contact with faculty members.

The fifth year is dedicated to student work with design processes, research, and value development. In the fall of that year, each student is engaged in a semester-long project exploring the design possibilities within an area of personal interest. This semester of independent study is followed by an elective studio semester during which each student has the opportunity to select a faculty member to work with to continue exploring the processes and values developed in the fall.



Opportunities and Resources

The department conducts a semester-long program for fourth-year students in Rome. Participants engage in a design studio and in seminars that emphasize the unique culture and environment of Italy and Western Europe. Other international studies are available through university exchange programs.

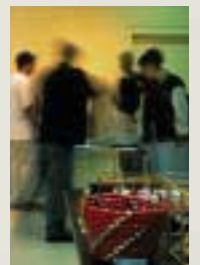
Departmental lectures regularly feature nationally and internationally known lecturers. Gallery 181 in the College of Design maintains a continuous schedule of major art and architectural exhibitions.

Students can pursue their research interests in a variety of venues, including an interdisciplinary outreach service of the College of Design in which students and faculty of various departments of the college work jointly on projects that address the opportunities for community and urban development in Iowa. They can also network with practicing professionals and learn about professional life through department-sponsored workshops.



Other on-campus activities help students develop intellectually and professionally. Through the Iowa State chapter of the American Institute of Architecture Students (AIAS), students can join their peers at local social events and at national symposiums all across the country. Architecture students can use their writing and photographic skills by contributing to *Core*, the department's student journal. Students may also participate in the University Honors Program, which offers seminars, special programs, and projects for undergraduates who have demonstrated the ability and motivation to assume more than the usual responsibility for their undergraduate education.

The College of Design's Career Services Office conducts workshops, publishes notices of job openings, and schedules interviews for graduating students. A faculty member of the Department of Architecture serves as intern adviser for those students seeking jobs in the profession while they are in school.





The Facilities

The College of Design, home of the Department of Architecture, features five stories of studio classrooms and offices wrapped around a public atrium capped with a vaulted skylight. Outside are expansive lawns, wild prairie plantings, and several display areas for public art. Inside are the gallery, Design Reading Room, model shop, Design Café, art supply store, and several computer labs. The computer graphics lab — with 20 advanced microcomputers — allows students to concentrate on image editing, three-dimensional modeling, and animation. Architectural design studios also contain computers for student use. The Architectural Technology Laboratory contains both computers and environmental simulation instruments, and the model shop is a fully equipped fabrication facility.



Demand for Graduates

Architects forge successful careers in a wide variety of professional settings. While the majority of Iowa State architecture graduates work in private architectural firms, some pursue creative opportunities as filmmakers, environmental designers, technical writers, and artists. Others put their problem-solving skills to work as real-estate developers, museum curators, historical preservationists, and public policy leaders. In the past several years, all Iowa State architecture graduates have found employment in the field or continued their education within six months of graduation.

Financial Assistance

The university offers financial assistance in the form of grants, scholarships, loans, and part-time employment. Scholarship recipients generally are selected on the basis of academic merit or other demonstrated talent as well as financial need. The College of Design awards one scholarship to entering students in design-related disciplines, and the department offers 27 scholarships and awards for students in the professional program.

High School Preparation

Minimum high school course requirements for admission to the department and the College of Design include four years of English, three years of math (including one year each of algebra, geometry, and advanced algebra), three years of science (including one year each of two of the following: biology, chemistry, and physics), and two years of social studies. Students who plan to enter the architecture program are encouraged, but not required, to take at least one semester of trigonometry and analytic geometry, one year of physics, and studio art classes.

Contact Us

To learn more about earning a degree in architecture, contact the department or the Office of Admissions:

Department of Architecture

Iowa State University
156 College of Design
Ames, IA 50011-3093
(515) 294-4717

<http://www.public.iastate.edu/~design/arch/index.html>

Office of Admissions

Iowa State University
100 Alumni Hall
Ames, IA 50011
(800) 262-3810

http://www.iastate.edu/~adm_info/homepage.html



Iowa State University does not discriminate on the basis of race, color, age, religion, national origin, sexual orientation, gender, marital status, disability, or status as a US Vietnam Era veteran. Any persons having inquiries concerning this may contact the Director of Affirmative Action, 318 Beardshear Hall, Ames, Iowa 50011, (515) 294-7612.