

AY 2002-2003 Annual Report

Institute for Design Research and Outreach (IDRO)

College of Design

Iowa State University

Executive Summary

The Institute for Design Research and Outreach (IDRO) was created in 1993 to serve as the research and outreach arm of the College of Design at Iowa State University. Its primary mission is to support the college and its faculty, staff and students in their research, extension, distance education and outreach activities.

The institute facilitates contact between College of Design faculty and outside organizations. Through IDRO, faculty and students work closely with citizen groups, businesses and communities in addressing real-world problems and in exploring opportunities for new research initiatives. The institute's emphasis is on the integration of applied research into the instructional and outreach elements of the college and its four departments: architecture, art and design, community and regional planning, and landscape architecture.

This report describes IDRO's efforts to fulfill its mission in academic year 2002-2003. Among the highlights:

- IDRO research, extension and outreach activities served 70 of Iowa's 99 counties and 149 of the state's 950 cities this year.
- IDRO associate director Tim Borich and research associate Nora Ladjahasan received a Federal Highway Administration Award for Environmental Excellence for their work on the "Aesthetic Initiative Measurement Systems (AIMS)" project for the Minnesota Department of Transportation.
- Associate professor of landscape architecture Julia Badenhope, Landscape Architecture Extension project manager Sandra Oberbroeckling and Tim Borich also received a Federal Highway Administration Award for Environmental Excellence for their work with "Iowa's Living Roadways Community Visioning Program" and "Iowa's Living Roadways Projects."
- The PLaCE (Partnering Landscape and Community Enhancement) program continues to receive applications and refer communities for off-campus studio and ISU Extension projects, including Council Bluffs, Fort Dodge, Grundy County, Hampton, Jefferson, Lake Park, the Meskwaki Settlement, Mount Ayr, New Virginia and Story County in the 2002-2003 academic year.
- The Community Visioning Program continues with Iowa Department of Transportation funding. Ten communities will participate in Visioning in 2003.
- Work continues on the Interstate 80 and Highway 30/Lincoln Highway corridor management studies for the Iowa Department of Transportation.

- The Design Extension model of the Nonprofit Management Academy has been adapted successfully for implementation in multiple locations throughout the state. Academies were held in Clinton County, Des Moines, Sioux City and Story County in 2002-2003.
- Work continues on a National Park Service project related to the preservation of a historic district in the Chickasaw National Recreation Area in Oklahoma.
- Associate professors Stuart Huntington and Gary Mattson, community and regional planning, received a grant for a study of “Iowa Places of Distinction: Keys to Success for Iowa’s Fastest Growing Rural Areas.”
- A multidisciplinary team from the College of Design, working with faculty from Beijing Polytechnic University, received continued funding from the National Science Foundation to create a virtual reality model of Beijing, People’s Republic of China. When completed, the three-dimensional virtual model will be used to guide urban planning and development in Beijing.
- Faculty development training was offered on grant writing, research procedures, and the new geographic information systems (GIS) software package “CommunityViz.”
- Work continues on testing CommunityViz software in three communities: Perry, Altoona and Dickinson County.

AY 2002-2003 Annual Report

Institute for Design Research and Outreach (IDRO)

College of Design

Iowa State University

Background

The Institute for Design Research and Outreach (IDRO) was created in 1993 to serve as the research and outreach arm of the College of Design at Iowa State University. Its primary mission is to support the college and its faculty, staff and students in their research, extension, distance education and outreach activities.

The institute facilitates contact between College of Design faculty and outside organizations. Through IDRO, faculty and students work closely with citizen groups, businesses and communities in addressing real-world problems and in exploring opportunities for new research initiatives. The institute's emphasis is on the integration of applied research into the instructional and outreach elements of the college and its four departments: architecture, art and design, community and regional planning, and landscape architecture.

Personnel

Mark Engelbrecht, dean of the College of Design, serves as the institute's director. Tim Borich, the associate director, oversees the institute's daily activities, and serves as the primary contact between faculty and potential community and organizational research partners/clients. Borich also is the College of Design's associate dean for research and outreach.

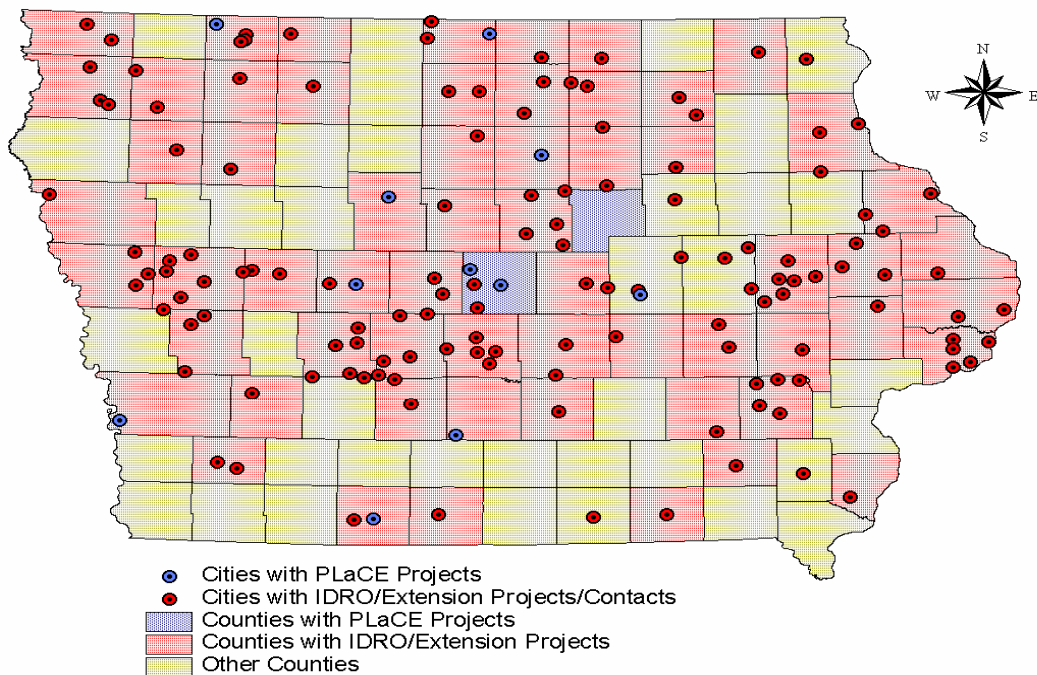
The institute's full-time research associate, Nora Ladjahasan, assists faculty and students in complying with the university's requirements in conducting research, collecting and analyzing data and preparing reports. A full-time communications specialist, Heather Sauer, divides her time between the institute and the college, providing support to administrators, faculty and staff in writing and editing a wide range of documents, including newsletters, news releases, research and studio reports, journal articles and grant proposals. A full-time graphic designer (currently on a one-year appointment), Jiwon Han, also divides her time between the institute and the college, designing a range of online and print communications, including portions of the college and IDRO Web sites, newsletters, reports, brochures and posters.

Donovan Olson, part-time distance education coordinator, helps schedule off-campus sections of college courses, apply for continuing education units, and promote the college's distance education programs to Iowa community college students and professionals. He also arranges to have distance-education classes recorded onto VHS tapes and DVDs for distribution to off-campus learners.

Design Extension faculty involved in outreach and extension work are Susan Erickson (landscape architecture), Stuart Huntington (community and regional planning) and Lois Warne (interior design). They conduct projects, workshops and other outreach activities with communities and funding agencies. In the past year, some of these projects involved College of Design students, serving the dual purpose of providing hands-on learning while supporting Iowa's communities. Krishna Das, based in the Johnson County Extension Office in Iowa City, has a part-time staff position coordinating and promoting the Nonprofit Management Academy and expanding the program throughout Iowa.

Functions

In keeping with its mission, IDRO focuses on the following four functions: research, extension, distance education and outreach. This report describes how well IDRO performed these four functions in 2002-2003. The following map shows the distribution of the institute's research, extension and outreach activities across Iowa. IDRO served 70 of Iowa's 99 counties and 149 of 950 cities; the contacts were not concentrated in a single area but were well-dispersed around the state.



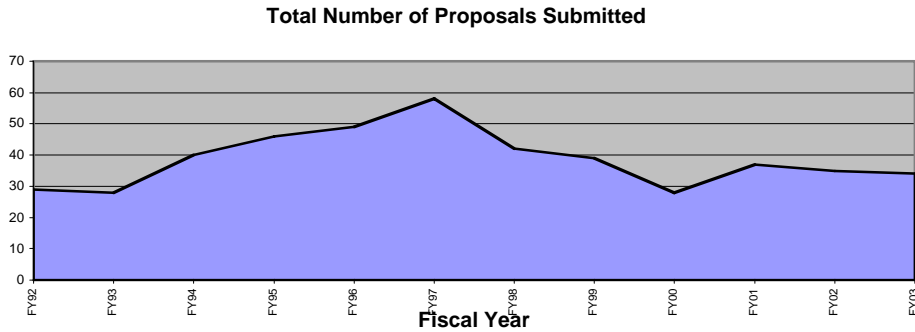
Listing of Cities by County with IDRO/Research/Outreach/Extension, Contacts or Projects

Counties and Communities Served Through IDRO/Design Extension

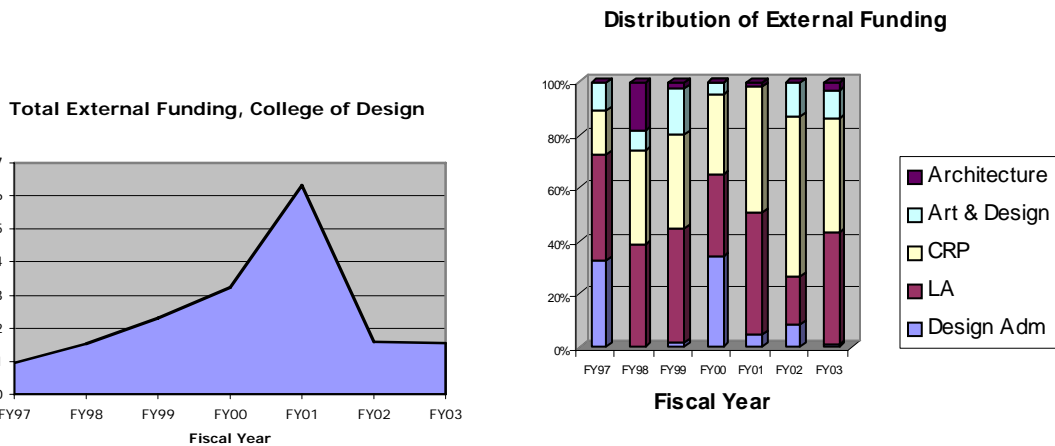
Boone County	Clinton County	Estherville	Fairfield	Red Oak	Story County
Boone	Clinton	Floyd County	Johnson County	Stanton	Ames
Luther	De Witt	Rudd	Iowa City	O'Brien County	Gilbert
Bremer County	Crawford County	Franklin County	Jones County	Paullina	Huxley
Denver	Charter Oaks	Hampton	Anamosa	Sheldon	Nevada
Bremer	Dennison	Greene County	Monticello	Palo Alto County	Story
Buena Vista County	Dow City	Jefferson	Wyoming	Emmetsburg	Tama County
Storm Lake	Ricketts	Scranton	Keokuk County	Polk County	Dysart
Butler County	Schleswig	Guthrie County	Ollie	Altoona	Tama
Greene	Westside	Guthrie Center	Linn County	Ankeny	Toledo
Parkersburg	Dallas County	Menlo	Alburnett	Des Moines	Warren County
Carroll County	Adel	Panora	Cedar Rapids	Pleasant Hill	New Virginia
Arcadia	Dexter	Yale	Fairfax	Polk	Washington County
Carroll	Grimes	Hamilton County	Hiawatha	Pottawattamie County	Kalona
Cass County	Perry	Webster City	Marion	Council Bluffs	Riverside
Atlantic	Redfield	Hancock County	Springville	Shelby	Washington
Cass	Woodward	Britt	Lyon County	Poweshiek County	Wellman
Cedar County	Davis County	Garner	George	Grinnell	West Chester
Clarence	Bloomfield	Hardin County	Rock Rapids	Ringgold County	Webster County
Cerro Gordo County	Decatur County	Ackley	Madison County	Benton	Fort Dodge
Mason City	Davis	Eldora	Earlham	Mount Ayr	Winnebago County
Nora Springs	Decatur	Hubbard	Winterset	Scott County	Buffalo Center
Swaledale	Des Moines County	Iowa Falls	Marion County	Bettendorf	Lake Mills
Cherokee County	Middletown	Union	Knoxville	Davenport	Rake
Cherokee	Dickinson County	Dunlap	Marshall County	Eldridge	Wineshiek County
Chickasaw County	Arnolds Park	Iowa County	Le Grand	Long Grove	Decorah
Fredericksburg	Lake Park	Marengo	Marshalltown	Princeton	Woodbury County
New Hampton	Okoboji	Williamsburg	Mitchell County	Shelby County	Sioux City
Clay County	West Okoboji	Jackson County	Osage	Defiance	Worth County
Spencer	Dubuque County	Maquoketa	Monona County	Earling	Manly
Clayton County	Cascade	Jasper County	Mapleton	Sioux County	Wright County
Clayton	Dubuque	Monroe	Soldier	Alton	Belmond
Edgewood	Worthington	Newton	Ute	Hull	
Elkader	Emmet County	Jefferson County	Montgomery County	Orange City	

I. Research

Since IDRO's inception, the college has recorded an average of 39 proposals per year. Thirty-four proposals were submitted this year, of which 67.6 percent were categorized as research and the rest as non-research. Non-research proposals refer to those that are used for instructional and training purposes, extension and outreach.



Of the 34 proposals submitted this year, 17 (50%) were awarded funds amounting to over \$1.6 million. This is about one-third lower than the average external funding for the past seven years and virtually the same level of funding as last year. The community and regional planning department led the college in external funding in both research and outreach for AY 2002-2003/FY 2003. It was followed by landscape architecture, art and design, architecture and design administration.



Completed Projects

A number of sponsored research and outreach projects are ongoing from past years. Only eight of 28 research projects were completed during this academic year. Three of these completed projects were for instructional purposes and were administered by the department of landscape architecture. Funded by the Dallas County Board of Supervisors, they involved GIS modeling and database management (1), site-suitability modeling for aggregate mining (2) and a landscape master plan (3), all for Dallas County.

Community Visioning Program (4) and Prairie Passage (5) projects were conducted by Landscape Architecture Extension. They served 12 Iowa cities, including Alburnett, Anamosa, Cascade, Earlham, Hiawatha, Johnston, Le Grand, Long Grove, Maquoketa, Monticello, Nora Springs and Stanton. These projects received \$288,564 in funding from the Iowa Department of Transportation.

The Institute for Design Research and Outreach itself completed two projects this year: the IOWAccess online housing information update (6) and “Housing Issues of New Hispanic Immigrants” (7). Funded by the Iowa Finance Authority, the IOWAccess update project involved updating Iowa housing information available via the Web. The project team interviewed 581 original lender participants to verify and update information, as well as 442 new lenders that were added to the database. The team also gathered information on 121 emergency shelters, 74 supported-living facilities for the elderly, 419 licensed nursing homes, and other multi-family rental housing. The new information is accessible online at <http://www.iowaccess.design.iastate.edu>.

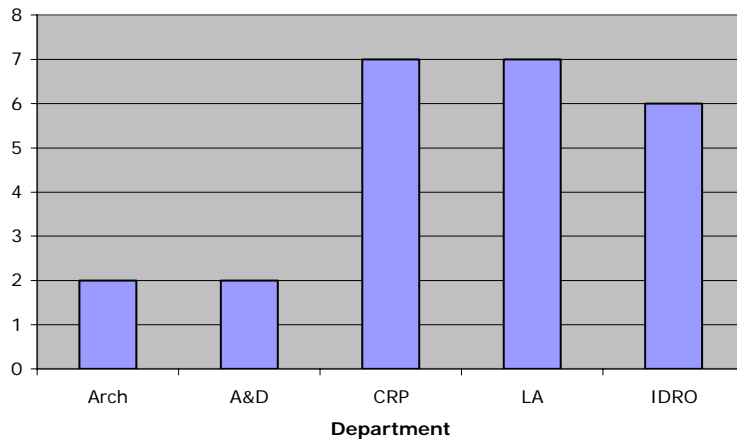
“Housing Issues of New Hispanic Immigrants” was completed without external funding. It involved sending questionnaires related to housing conditions and needs of 250 Hispanic immigrants within the vicinity of Hampton, Iowa. Contacts to the prospective respondents were made with the help of St. Patrick Catholic Church in Hampton.

Ongoing Projects

Twenty-two projects are still in progress within the College of Design. Two of these are studies being done on areas and with collaborators outside the United States, i.e., Beijing, China (multidisciplinary project housed in architecture and begun in 2001) and Ghana (community and regional planning project recently funded and begun in June 2003). One of the 22 projects still awaits funding. The departments of landscape architecture and community and regional planning each have seven ongoing projects, followed by IDRO with six projects, while architecture and art and design each have two. (Some of these overlap departments as they are multidisciplinary.)

Funding for landscape architecture projects this year came from such sources as the US Department of the Interior–National Park Service, US Department of Forestry–Forest Service, Iowa Department of Natural Resources and Iowa Department of Transportation (IDOT). Funding for community and regional planning projects came from Howard R. Green Company, IDOT, the US Department of Agriculture, and the World Bank. The ongoing architecture projects are being sponsored by the National Science Foundation and the American Institute of Architects. The art and design projects are being sponsored by the ES-USDA and Iowa Easter Seals AgrAbility program. For details on these projects, see Appendix A: “IDRO Activities Worksheet, AY 2002-2003.”

Ongoing Projects, College of Design



Ongoing IDRO Projects

2003 MDO Directory Update

Eighty-three MDOs listed in the 1998 Directory of Multicomunity Development Organizations are being contacted via telephone and e-mail to update their information. Data gathering is ongoing. The directory is being updated on the IDRO Web site as new information is verified.

CommunityViz

This project began in August 2002 and is ongoing. Two communities in Iowa (Perry and Altoona) were selected to test the utility of the program. This involved planning processes such as attending meetings with the communities' stakeholders and envisioning the future of their communities. For Perry, secondary data, such as block-level demographic data and assessor's parcel information, also were gathered. For Altoona, buildings along the Eighth Street commercial corridor were photographed. Testing of the data on the "policy simulator" section of the CommunityViz program is now being done. The software will also be tested on another project titled "Integrative Planning and Practices for Watershed Water Quality Improvement," using Dickinson County data.

Department of Architecture's Professional Admission Policy and Its Impact on Students' Retention and Graduation

Through a grant from the Professional and Scientific (P&S) Council, a survey of current students and alumni, and those who went through the preadmission process in the department, was conducted. Three sets of questionnaires were constructed and administered, and data have been entered and tabulated. Data from the survey and secondary data are still being analyzed, and the final report is still in progress. This project is a collaboration between IDRO and the architecture department's advising office (Mary Joyce VeVerka and Jean Jonas).

Archive of Planning Documents

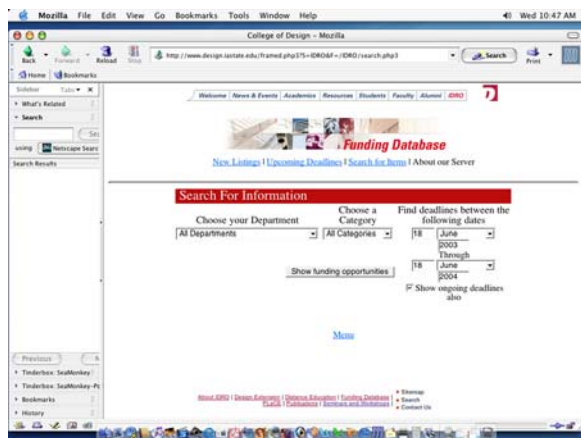
IDRO has become the state repository for comprehensive plans and other planning documents. This is the outcome of a fall 1999 survey of local land-use planning in Iowa. At present, about 250 cities have submitted copies of their most current planning documents to IDRO. The institute has about 115 comprehensive plans created or updated from 1965 to 2001; 150 zoning ordinances; 130 subdivision regulations; and 70 community builder plans. Also available are studio/community reports or studies prepared by the College of Design's students. At the county level, IDRO has received planning documents from 45 counties. It has nearly 30 county comprehensive plans, 30 county zoning ordinances and other planning documents. The institute continues to collect planning documents from both cities and counties.

Plans for IDRO Web site

Work is under way to redesign the IDRO Web site and update the information posted online. The latest reports/research/publications that relate to research, outreach and extension will be incorporated into the Web site.

Online Funding Database

The IDRO Web site houses the College of Design's funding opportunities database, a searchable online database of a wide range of funding and exhibition opportunities listed by department and category (award, exhibition, fellowship, grant, etc.). This database may be accessed at <http://www.design.iastate.edu/idro> and is updated regularly.



Human Subjects Compliance

The institute is actively guiding faculty, staff and students in complying with Iowa State's human subject requirements. Research associate Nora Ladjahasan is available to anyone who needs assistance with human subject certification. She is also a member of the university's Institutional Review Board (IRB), a committee that approves/disapproves protocols that deal with human subjects.

New Facilities

The College of Design's new Geographic Information Systems (GIS) Graduate Laboratory, located in 526 Design, was designed and constructed in spring 2003 by fifth-year architecture and senior interior design students. The \$100,000 facility features 12 student work stations, an instructor station, a data input station and a dedicated GIS server. Since its completion in May, the lab already has successfully hosted a four-day on-site CommunityViz software training session (referenced under Section IV: Faculty Development Activities in this report) and also provided the lab space for the summer CRP 451/551 Introduction to GIS course. Faculty members conducting GIS-related research also will use this lab.



II. PLaCE program

The Project for Partnering Landscape and Community Enhancement (PLaCE) was initiated in August 2000. The PLaCE program aims to enhance and promote the quality and character of Iowa's landscapes and communities. This goal is rooted in support of economic competitiveness as well as proper development and stewardship. Unique, dramatic enhancements to the landscapes and communities of Iowa are viewed as ways to attract and retain a new group of talented and energetic citizens, a resource very much in demand for the state's future.

During the 2002-2003 academic year, 11 PLaCE projects were accomplished, and eight more remain on file to be studied by future studio classes or combinations of graduate assistants and extension staff.

Design Recommendations for Selected Buildings on the Town Square in Mount Ayr, IA (\$7,500); Mark Engelbrecht, Tim Borich, Bruce Bassler, Jeffrey Dolan

This project addressed specific problems of specific buildings surrounding the town square in Mount Ayr. It provided design recommendations based on both the physical needs of the building structures and the design requirements of the historic context of the square.

The Future of a Small Town: Lake Mills, Iowa; Duane Shinn

A community and regional planning studio class on urban design and practice created a plan for Main Street enhancements in Lake Mills. This project provided detailed design recommendations and methods for financing their implementation.

Roadside Development: Entrance to the Meskwaki Settlement, Tama, Iowa (\$1,500); Duane Shinn

A community and regional planning studio class on urban design and practice studied the entrance to the Meskwaki Visitors Center and Casino during fall semester 2002. They studied user needs, cultural and historic background, and existing site elements. Two alternate plans for site development of an expanded visitor's center were presented.

Lake Park, Iowa Community and General Development Plan (\$2,500); Karen Jeske

During the summer semester 2003, a group of six graduate students in Community and Regional Planning will prepare a future development plan and set of implementation strategies for Lake Park. The focus of this plan will be economic development, recreation, and beautification.

Grundy County Comprehensive Plan Update (\$5,000); Karen Jeske

During fall semester 2002, a group of nine undergraduate students in community and regional planning prepared an update of Grundy County's 1971 comprehensive plan. The students conducted two town meetings and met with the County Board of Supervisors while completing their work.

Story County Fringe Area Studies (\$500); Karen Jeske

During fall semester 2002, a group of six graduate students in community and regional planning prepared studies of the two-mile fringe areas around Gilbert and Nevada. The results of these studies were used by Story County to generate land-use plans for these areas. The studies also provided Story County with a method for preparing automated plans for other communities in the county using geographic information systems (GIS).

Council Bluffs Indicator Study; Riad Mahayni

A community and regional planning studio class in community development planning and programming performed an indicator study for the city of Council Bluffs during spring semester 2003. The study focused on five categories: economic development, environment, transportation and infrastructure, social framework, and housing and development. Indicators were chosen for each category that evaluate Council Bluffs' current status and trends since 1990 in each area in comparison with three other Iowa cities.

Fort Dodge Retail Design Project (\$900); Dorothy Fowles

Interdisciplinary student teams from the fall 2002 Interior Design Senior Studio and Graphic Design Practicum developed design recommendations related to the interior and exterior appearance of 10 Fort Dodge businesses. This community outreach project provided the students with real-life interaction with clients having specific needs and wants. It focused on the revitalization of businesses with a range of physical facilities, some historical. The joint effort produced a series of presentation boards and a final report that the businesses can use to guide future improvements to their retail spaces.

New Virginia Park (\$400); Heidi Hohmann and Mira Engler

A spring 2003 landscape architecture site planning class did a conceptual design for Gerry Allen Memorial Park in New Virginia. Land for the park, recently donated to the town, comprises seven acres located on the town's northwestern side. The students began the project by visiting the site and meeting with the New Virginia Development Corporation in late March. Over the next five weeks, the students developed individual conceptual designs for the park, investigating the town's history, researching its natural and cultural resources, and interviewing townspeople about their ideas for the park and community. In early May, the students presented their 39 individual designs to the town, in a two-hour town meeting in New Virginia. The students' projects are being compiled and will be provided to the town as a final product.

Christ Lutheran Church, Jefferson (\$1,000); Susan Erickson

Christ Lutheran Church requested assistance in long-term site development plans for a church congregation located at the southern gateway to the community of Jefferson. Landscape architecture graduate student Brent Yezek and landscape architecture lecturer/LA Extension staff member Susan Erickson consulted with a committee from the congregation to plan for development of outdoor spaces that will fit the needs of the church members, students from the nearby school, and community members.



Franklin General Hospital, Hampton (\$3,000); Susan Erickson

This facility in Hampton is a combination hospital/outpatient clinic/nursing facility/assisted-living facility, all under one roof. A community recreation facility is also being planned for an adjacent property and linkages will be established between the two facilities. Franklin General Hospital requested assistance with an overall campus plan for their large campus of approximately 65 acres. Susan Erickson, together with graduate research assistant Brent Yezek, performed literature reviews of published information about therapeutic gardens in healthcare facilities and performed conceptual site planning for development of gardens that will be of benefit to residents, patients, and staff at the facility, as well as to their families. (See Appendix B for the final presentation/sample of this community outreach project.)

III. Applied Research & Extension Activities

Nonprofit Management Academy

In 2002-2003, the Nonprofit Management Academy provided training in Clinton County, Des Moines, Sioux City and Story County. The academy model was created by Design Extension and first established in Des Moines in 1999 in partnership with the United Way of Central Iowa's Management Assistance Program. Since then the model has been successfully adapted for use in several other Iowa communities in collaboration with other United Way chapters, universities and organizations. Hundreds of participants from nonprofit human services groups, hospitals, government agencies, churches, private schools, arts organizations, environmental groups, and other nonprofit organizations have been trained in such varied topics as financial management, governance and leadership, diversity issues, technology management and effective supervision. Part-time academy program coordinator Krishna Das has been instrumental in coordinating and promoting the program and its expansion to other communities.



Community and Regional Planning Extension Activities

Success Factors among Iowa Communities

Stuart Huntington and Gary Mattson received a \$20,000 grant to study success factors among Iowa communities. A leader in Extension to Communities, Huntington provided training to field staff on how to conduct planning and zoning workshops, and also continued his chairmanship of the Communities Management Team, one of three committees working to implement changes in the Extension to Communities program.

Community Outreach

Huntington also provided planning assistance to more than 160 Iowa communities.

Interior Design Extension Activities

Faculty Professional Development Assignment

Lois Warne was on Faculty Professional Development Assignment for the period July 1 to December 31, 2002. Her study focused on interior materials and furnishings to meet Americans with Disabilities Act (ADA) and universal design specifications. As a result of her professional

development assignment, she is now working to link industry Web sites to a general ISU site listing material and furnishing resources. She resumed her teaching schedule in spring 2003, teaching ArtID 295 with 37 students and ArtID 351 with 38 students.

AgrAbility Program

Warne continues to work with the AgrAbility program, funded by ES-USDA. In this program she collaborates with Mary Yearns and Marcy Thomas from Human Development and Family Studies, to work with case-study families, offering them design plans to better use their existing space and furnishings to best meet the needs of family members with mobility impairments.

Landscape Architecture Extension Activities

Therapeutic Gardens at Healthcare Facilities

Design concepts at Franklin General Hospital (see previous section on PLaCE program) focused on designing outdoor spaces with potentially positive health benefits. A project in progress will survey nursing homes and assisted-living facilities in Iowa to assess the quantity and quality of their outdoor spaces and horticulture therapy programming, as well as to determine their level of interest in improving their outdoor spaces and horticulture therapy.

A related project in the works is the preparation of an NRI grant proposal to USDA Rural Economic Development. This proposal will fund a workshop for Iowa healthcare professionals and will focus on benefits of providing therapeutic gardens at Iowa's nursing homes and assisted living facilities. This proposal is being prepared in cooperation with an ISU Extension specialist in the horticulture department on campus.

Landscape Plants for Iowa

A re-issue of a classic Extension publication from 1967 is being planned. "Landscape Plants for Iowa" was first prepared by Ralph Rothacker and Margherita Tarr. Out of print for many years, this publication is being updated and is expected to be available to the public in fall 2003.

Community Outreach

Susan Erickson also presented several workshop presentations for large groups and provided assistance to 33 individuals, communities and nonprofit organizations who had problems or concerns related to landscape or environment.

2003 Visioning Program

Ten communities are participating in the Community Visioning Program in 2003: Alton, Belmont, Denver, DeWitt, Edgewood, Fairfield, Fredericksburg, Middletown, Mount Ayr and New Hampton. IDOT funding is expected to continue next year.

Transportation Research Board Poster Session

Julia Badenhop and Sandra Oberbroeckling went to Washington, DC, to present a poster on the Community Visioning Program at the 2003 Transportation Research Board Conference held January 12-16, 2003. The poster was part of a session titled "Public Involvement in Transportation." Representatives from a number of state DOTs, including Delaware, Missouri and Kansas, expressed an interest in the Visioning program.

State Capitol Display, Landscape Architecture Week

As part of Landscape Architecture week in Iowa (April 21-25, 2003), Iowa State created a Visioning program display that was featured in a display by the Iowa Chapter of the American Society of Landscape Architects (ASLA) at the State Capitol. The display provided information regarding the FHWA national award, as well as the names of participating landscape architects and student interns, a map showing all Visioning communities to date, and an example of a completed Visioning project.

Prairie Passage Brochure

At the request of the Iowa DOT, ISU LA Extension developed a brochure for the Iowa segment of the FHWA-sponsored Prairie Passage. In cooperation with the Iowa DOT Roadside Design Office, the Living Roadway Trust Fund, and the ISU GIS Facility, ISU LA Extension identified three prairie passage routes along the national route (Interstate 35) through Iowa. The three routes reflect the varying topography and glacial movement (prairie potholes and moraines and upland slopes) across the state of Iowa.

LA Extension staff and students identified 17 locations of prairie remnants, historical sites, and current prairie events to feature in the brochure. In addition to general descriptions of each site, the brochure provides information regarding facilities available, admission costs and hours of operation. The brochures, printed in December 2002, will be available to the public at locations such as welcome centers and rest areas.

Community Visioning Program Evaluation Summary Report

Trees Forever field staff conducted brief follow-up surveys on project implementation issues with 33 past Visioning communities. The data from 29 of the communities surveyed was analyzed by IDRO research associate Nora Ladjahasan and compiled in a written summary report, printed in January 2003.

In addition, ISU staff and students made site visits to the following communities to document completed projects: Ackley, Arnold's Park, Carroll, Centerville, Clarence, Decorah, Dysart, Eldora, George, Marengo, Orange City, Parkersburg, Princeton, Red Oak, Rock Rapids, Rudd, Storm Lake, Urbana and Vinton. Digital photos were taken at these sites, along with field notes. Images from the site visits were featured in the abovementioned summary report.

RAGBRAI

Ten communities along the 2002 RAGBRAI route were current or past Visioning communities: Anamosa, Charles City, Cherokee, Emmetsburg, Forest City, Nora Springs, Oelwein, Orange City, Rudd and Titonka. Posters designed at ISU were displayed in these 10 communities during RAGBRAI July 21-27, 2002. The posters highlighted proposed and completed projects in the 10 communities and promoted the Visioning program in general.

IV. Faculty Development Activities

Research and Outreach Orientation Seminar

This session, held in Room 130 on October 3, 2002, was offered to help inform College of Design faculty and staff of the requirements for conducting research at Iowa State University, such as preparation of goldsheets, and human subject research requirements for both sponsored and non-sponsored projects. Guest presenters from the Office of the Vice Provost for Research, Sponsored Programs Administration, Human Subject Research and IDRO explained the requirements before faculty, staff and graduate students can initiate any project (studio, thesis and/or creative component, sponsored projects). Other guidelines and issues such as intellectual property were also discussed. Approximately 20 faculty, staff and students attended.

Grant Writing Workshop

IDRO arranged for Richard Freed to present a two-day grant-writing workshop to 20 College of Design faculty at the beginning of spring semester 2003. The workshop provided faculty an opportunity to work through putting together a grant proposal using the Grants Workbench online software. The software asks the user questions about the grant proposal and organizes the answers in a logical way as it prepares an outline for the proposal. The software can create a simple outline or a more robust outline that includes paragraphs that were written while working through the program.

More information on the presenter and software may be found on the following Web sites:

<http://www.las.iastate.edu/newnews/freed1104.shtml>

<http://winningproposal.com/>

CommunityViz Workshop

This workshop was conducted by a consultant from CommunityViz and was attended by nine faculty and staff of IDRO, CTRE, and the CRP and LA departments. It was held on May 20-22, 2003 in the college's new GIS Graduate Lab (Room 526). Participants were trained in how to run the program using both "canned" and Iowa data, i.e., Perry and Altoona data.



IDED Staff Session at the IDRO Advisory Committee Meeting

On April 17, 2003, staff from the Iowa Department of Economic Development introduced the concept behind the Iowa Values Fund. They mentioned the probable projects that IDRO/College of Design could coordinate with their office. The dialogue was conducted among the IDED staff and members of the IDRO Advisory Committee. Members of the IDRO Advisory Committee are Paul Anderson, Tim Borich, Susan Bradbury, Chui-Shui Chan, Susan Erickson, Jamie Horwitz, Stuart Huntington, Sunghyun Kang, Nora Ladjahasan, Steve Padgitt and Heather Sauer.

V. Distance and Continuing Education

Project Objectives

The College of Design continues to pursue its goal of creating a quality distance education program that meets the needs of learners within and outside the state of Iowa. In 2000 the college began a major distance education initiative by offering a 2+2+2 Transfer Plan to community college students and a Master of Community and Regional Planning degree program to off-campus students.

The transfer plan for community college students is intended to inform students about, and prepare students for, transfer to Iowa State upon graduation from their community college to pursue a degree in community and regional planning. It is also intended to minimize credit loss associated with transfer from a community college to ISU. The Master of Community and Regional Planning program allows professionals to complete planning courses and pursue a degree without leaving their employment and relocating to the ISU campus. Both programs utilize a distance education delivery system to deliver the accredited on-campus program courses to off-campus students.

This initiative was made possible by a three-year grant from the WOI Grant for Distance Education. The college is currently in year two of the three-year funding commitment.

Progress Toward Goals

The college made progress toward its goals by pursuing four activities during the past year: transitioning from the Iowa Communications Network (ICN) to digital versatile disc (DVD) delivery; building enrollment in distance education program courses and continuing progress toward self-sustainability; and completing a marketing and outreach initiative targeted toward potential markets and students.

Transition from ICN to DVD

In 1999, the college was extremely excited about utilizing its new ICN-equipped auditorium to deliver two 2+2+2 plan courses to community college students across the state. The ICN also allowed the college to deliver courses in its on-campus master's program to off-campus working professionals across the state. Marketing and outreach efforts resulted in approximately six to eight interested students and approximately four early enrollments each semester in each of the college's programs.

Several problems plagued the initiative from the start. During the start-up phase, the college established a policy that revenue from student enrollment should cover ICN delivery costs. That way ICN courses would be revenue-neutral and any additional revenue could go toward program coordination. Each academic year, several students would enroll in courses, often one person per site. Because it took tuition revenue from two to three students to pay for ICN fees, several courses were canceled. As a result, in academic years 2000, 2001 and 2002, 14 courses were canceled. More than 20 interested off-campus students were unable to take those courses.

In addition, a university policy regarding large classrooms forced the college to cancel CRP 253 during the 2001 and 2002 academic years, even though the off-campus sections had several enrollments and the on-campus sections typically contained 150-175 students.

These difficulties forced the college to accelerate its transition from ICN to DVD. Switching from ICN to DVD solved two problems. DVD eliminates the need for an ICN-equipped auditorium and eliminates the room rental and line fees associated with ICN delivery, making more funds available for materials and program coordination.

In December 2001 the college acquired DVD-recording and -duplicating equipment and began a four-phase transition process. Phase one was to acquire, install, test and put into operation DVD-recording and -duplication equipment. Phase one was completed in March 2002 and will continue as equipment needs are identified. Phase two involved transitioning from ICN to videotape to DVD. Phase two was completed in April 2002. Phase three involves implementing interactive components including WebCT for communication, material distribution and facilitation of assignments and testing. This has begun and will be completed and implemented in fall 2003. Phase four involves revising and implementing marketing efforts. Phase four is ongoing.

While finding the best way to deliver courses was a challenge, the transition from ICN to DVD delivery will allow the college to meet program enrollment goals, serve a broader audience of learners, and become self-sufficient by the end of the grant period. During the first year of implementation, the transition from ICN to DVD has reduced the dependence on grant funds and increased the funds available for equipment, supplies and program coordination. Table 1 shows the funds available with two students enrolled in one ICN or DVD course. Costs and fees are based on 2002 tuition and fees for two off-campus students taking a course from one site.

Table 1. Funds available with two students enrolled in one ICN or DVD course

Enrollment/delivery	Students	Sites	Tuition	CECS Fees	ICN Fees	Funds Available
Undergrad/ICN	2	1	\$924	\$249	\$1,236	(\$561)
Graduate/ICN	2	1	\$1,464	\$395	\$1,236	(\$167)
Undergrad/DVD	2	N/A	\$924	\$249	N/A	\$675
Graduate/DVD	2	N/A	\$1,464	\$395	N/A	\$1,069

If the initiative meets its enrollment targets, it can achieve self-sustainability by the end of the grant period (see attached budget).

Building Enrollment

The college set an enrollment goal of 22 students in its distance education program in the WOI Funding Proposal. Two undergraduate students who have completed one or more courses have transferred following the 2+2+2 plan. No graduate students have enrolled in the MCRP via distance education program. However, the program has experienced an increase over the previous two years in the number of undergraduate and graduate courses completed by distance education students. A total of 56 students completed courses in the programs in academic year 2003. Table 2 shows the number of students who completed courses for academic years 2001, 2002 and 2003.

Table 2. Total number of students who completed courses for AY 2001, 2002 and 2003

Classification	AY 2001	AY 2002	AY 2003
Undergraduate	11	9	45
Graduate	7	6	7
CEU Students	N/A	40	4
Totals	18	54	56

In addition, the college has experienced an increase in the number of courses conducted from eight courses in academic year 2002 to nine courses in academic year 2003. Table 3 shows the increase in the number of courses conducted from AY 2000 to AY 2003.

Table 3. Increase in courses conducted from AY 2000 to AY 2003

Academic Year	Courses Conducted
2000	3
2001	6
2002	8
2003	9

In general, students are taking undergraduate and graduate courses via distance education to complete the requirements of other departments or universities, to compensate for scheduling conflicts, or taking courses to continue their education.

Enrollment in distance education courses by on-campus students has increased during the past two academic years as well. An increase in enrollment in distance education courses by off-campus students generates tuition and fee revenue to pay for instructional, delivery and administrative costs, allows for the expansion of course offerings and moves the initiative toward its self-sustainability goal. Enrollment in distance education courses by on-campus students generally provides delivery revenue but does not provide tuition revenue, diminishing the college's capacity to deliver courses to all distance education students, unless there is some type of compensation for on-campus students enrolled in off-campus courses.

Marketing

In Summer 2002 the coordinator traveled to nine city or county planning offices, seven councils of governments, and eight community colleges. The primary goal was to inform them about courses and programs available to off-campus students and to increase enrollment in distance

education courses. The coordinator provided each organization with program information and marketing materials to be distributed to students, employees, and interested individuals.

Future Goals

The College of Design will pursue the following activities during the next year: continue to meet enrollment targets set out in the College of Design Proposal for WOI Funding; complete phases three and four of the ICN to DVD transition process; improve DVD production equipment, facilities, and distribution systems; and expand marketing and outreach efforts both within and outside of Iowa. In addition, the College will investigate offering more courses that will meet the diverse needs of learners both off-campus and on-campus.

Anticipated Funding Needs for AY 2003-2004

The College of Design has requested year three funding of \$20,000. Additional funding may be required to upgrade DVD recording and duplicating equipment and to fund expansion of this initiative to on-campus students.

Year 3 Proposed Budget

Fall 2003 Revenues	
Graduate tuition (10 students x 3 cr/hrs x \$280)	8,400
Undergraduate tuition (12 students x 3 cr/hrs x \$181)	6,516
CEU income (10 students)	500
Materials fee (\$33/credit x 76 cr/hrs)	2,533
WOI funding for two initiatives (1/2 year)	9,300
<i>Total revenues</i>	<i>27,249</i>
Fall 2003 Expenditures	
Continuing Education fees (tuition x .27)	4,027
Continuing Education CEU fees (\$10/student-course)	100
DVD media, jewel cases, labels, postage (76 cr/hrs x 5 discs x \$6 x 1.25)	2,850
DVD recording/duplicating equipment	2,500
Distance education coordinator (1/2 time w/benefits, 1/2 year)	12,375
2 Work Study Students	1,500
Travel (1/2 year)	1,500
Printing, postage, communication, supplies (1/2 year)	2,397
<i>Total expenditures</i>	<i>27,249</i>

Spring 2004 Revenues	
Graduate tuition (10 students x 3 cr/hrs x \$280)	8,400
Undergraduate tuition (12 students x 3cr/hrs x \$181)	6,516
CEU income (10 students)	500
Materials fee (\$33/credit x 76 cr/hrs)	2,533
WOI funding for two initiatives (1/2 year)	9,300
<i>Total revenues</i>	<i>27,249</i>
Spring 2004 Expenditures	
Continuing Education fees (tuition x .27)	4,027
Continuing Education CEU fees (\$10/student-course)	100
DVD media, jewel cases, labels, postage (76 cr/hrs x 5 discs x \$6 x 1.25)	2,850
DVD recording/duplicating equipment	2,500
Distance education coordinator (1/2 time w/benefits, 1/2 year)	12,375
2 Work Study Students	1,500
Travel (1/2 year)	1,500
Printing, postage, communication, supplies (1/2 year)	2,397
<i>Total expenditures</i>	<i>27,249</i>

Year 4 Proposed Budget

Fall 2004 Revenues	
Graduate tuition (15 students x 3 cr/hrs x \$280)	12,600
Undergraduate tuition (15 students x 3cr/hrs x \$181)	8,145
CEU income (15 students)	750
Materials fee (\$40/credit x 105 cr/hrs) *****	4,200
WOI funding for two initiatives (1/2 year)	0
<i>Total revenues</i>	<i>25,695</i>
Fall 2004 Expenditures	
Continuing Education fees (tuition x .27)	5,601
Continuing Education CEU fees (\$10/student-course)	150
DVD media, jewel cases, labels, postage (105 cr/hrs x 5 discs x \$6 x 1.25)	3,938
Distance education coordinator (1/2 time w/benefits, 1/2 year)	12,375
2 Work Study Students	1,500
Travel (1/2 year)	500
Printing, postage, communication, supplies (1/2 year)	1,631
<i>Total expenditures</i>	<i>25,695</i>

Spring 2005 Revenues	
Graduate tuition (15 students x 3 cr/hrs x \$280)	12,600
Undergraduate tuition (15 students x 3cr/hrs x \$181)	8,145
CEU income (15 students)	750
Materials fee (\$40/credit x 105 cr/hrs)	4,200
WOI funding for two initiatives (1/2 year)	0
<i>Total revenues</i>	<i>25,695</i>
Spring 2005 Expenditures	
Continuing Education fees (tuition x .27)	5,601
Continuing Education CEU fees (\$10/student-course)	150
DVD media, jewel cases, labels, postage (105 cr/hrs x 5 discs x \$6 x 1.25)	3,938
Distance education coordinator (1/2 time w/benefits, 1/2 year)	12,375
2 Work Study Students	1,500
Travel (1/2 year)	500
Printing, postage, communication, supplies (1/2 year)	1,631
<i>Total expenditures</i>	<i>25,695</i>

VI. Awards

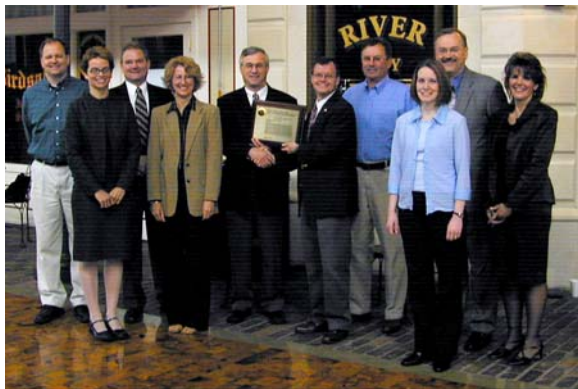
Two ISU projects in which IDRO was involved received national awards presented April 22, 2003, at the US Department of Transportation in Washington, DC. They were among the 12 winners nationwide of the Federal Highway Administration's (FHWA) 2003 Environmental Excellence Awards. The recipients were selected from among 134 nominations from 38 states.

FHWA Environmental Excellence Awards (for Excellence in Livable Communities)

The Iowa's Living Roadways Community Visioning Program and the Iowa's Living Roadways Projects Program were honored in the Livable Communities category. These projects are collaborative efforts between ISU's department of landscape architecture, the Iowa Department of Transportation (DOT), the nonprofit organization Trees Forever and private-sector landscape architects.

The Community Visioning Program consists of a process that encourages creative and strategic thinking about landscape improvements along transportation corridors. The Living Roadways Projects program helps communities carry out their Visioning plans by providing funds for implementation of locally led enhancement projects. Since 1996, 79 communities have participated in the Visioning program and 184 Projects have been funded in 138 communities.

Project contributors from Iowa State included Julia Badenhope, associate professor of landscape architecture; Tim Borich, IDRO associate director; and Tim Keller, professor and chair of the landscape architecture department.



Community Visioning



AIMS

FHWA Environmental Excellence Awards (for Excellence in Environmental Research)

The Aesthetic Initiative Measurement System (AIMS) received an award in the Environmental Research category. AIMS is a joint project of ISU's Institute for Design Research and Outreach (IDRO), the department of landscape architecture and the Center for Transportation Research and Education (CTRE); the Minnesota DOT and landscape architect Joan Iverson-Nassauer, Ann Arbor, Mich.

The AIMS project was conducted to develop and test instruments and protocols that the Minnesota DOT can use to understand and document how travelers and neighbors perceive the

visual quality of Minnesota's highway corridor treatments and landscapes. The AIMS tool offers an efficient way to learn about the aesthetic qualities that the public values in its highway corridor elements and landscapes.

Project contributors from Iowa State included Tim Borich and Nora Ladjahasan (IDRO), Tim Keller (LA) and Mark Anderson-Wilk (CTRE). The Minnesota DOT funded the AIMS project through CTRE.

VII. Outlook for the Future

IDRO and Design Extension continue to operate in a changing economic and institutional environment. Net revenues from distance education courses and continuing education are expected to see moderate increases.

Although PLaCE projects generate only a small portion of the institute's total budget, these revenues are projected to increase, especially with the advent of the College of Design's new GIS lab.

The trend toward needing cost recovery and sponsored projects to sustain the college's goals in research and outreach is likely to continue into the foreseeable future. As budget reductions in base research and extension funding for IDRO have occurred over the past three years, the need for sponsored funding has increased. Traditionally, a major clientele for College of Design sponsored funds has been state and local government. Both have also been hit with budget constraints the past two years, and there will likely be little fiscal relief for the next one to two years within this clientele group. Unless new sources of funds are identified and secured, total sponsored funding is projected to show only incremental increases over the \$1.5 million level of FY 02. More faculty participation with a greater number of sources is needed to sustain sponsored funding growth in the college.

IDRO's extension and research base funding levels are projected to remain flat or decrease slightly next year. One notable exception has been the addition of a half-time extension community and regional planning faculty position funded through the ISU President's Office. These "enhancement funds" were secured through a collegiate application for budget reallocation. Monica Haddad, a recent PhD graduate from the University of Illinois, was hired to oversee the new GIS lab, teach GIS courses, and develop GIS extension and outreach programs for communities in Iowa.

Christopher Seeger will join the landscape architecture faculty/Design Extension faculty as the ISU Extension landscape architect this fall (2003). This will be the college's first full-time extension, nine-month or "B-based" position. Funding for the remaining two months is expected through teaching summer salary, grants or other sponsored funding. Beyond extension programming, it is hoped this position will also lead to increased research activity.

A third change in extension personnel will occur during the course of AY 2003-2004 as Stuart Huntington, associate professor and extension specialist in community and regional planning,

will be retiring in spring 2004. Huntington has provided extension programming to literally hundreds of Iowa's communities and thousands of its citizens. He will be sorely missed. The department of community and regional planning and IDRO will begin searching for a replacement next fall to help ease the transition.

IDRO will continue to provide service to both the college and communities in Iowa. The PLaCE program continues to draw applications and provide opportunities for experiential/service learning. Students employed directly by the institute will again number around 10 next year. More than 120 Iowa communities will be aided in part through sponsored funds of \$1.5 to \$2 million.

IDRO will also likely play a more critical role in the college with its plans to nearly double the size of its graduate programs and develop a PhD in design. Both these objectives will not only enhance the collegiate capacity for research, but create increased need for fiscal support.

Appendix A. IDRO Activities Worksheet, AY 2002-2003

Type	Status	Date	Faculty involved	Department	Title	Cities	Funded	Amount	Funding Agency
Administrative	Ongoing		Nora Ladjahasan	IDRO	Archive of Iowa city & county planning documents				
Awards		4/22/03	Nora Ladjahasan, Tim Borich	IDRO	2003 Federal Highway Administration Environmental Excellence Award in the category of Environmental Research– “Aesthetic Initiative Measurement Systems (AIMS)”				
Awards		4/22/03	Julia Badenhope, Sandra Oberbroeckling	LA Extension	2003 Federal Highway Administration Environmental Excellence Award in the category of Livable Communities– “Iowa’s Living Roadways Community Visioning Program and Iowa’s Living Roadways Projects”				
Data analysis	Ongoing	Spring 2003	Nora Ladjahasan	IDRO	CRP Outcomes				
Display		4/21-25/03	Julia Badenhope, Sandra Oberbroeckling	LA Extension	Visioning program display featured at the Iowa Chapter of the American Society of Landscape Architects (ASLA) Week at the State Capitol				
Extension/prof. practice			Lois Warne	A&D	Home Planning Workshops				
Extension/prof. practice		Summer 2002	Lois Warne (student)	A&D	Worked on the exterior specifications of the ICCA Universal Design House Project in Fort Dodge	Fort Dodge			

Appendix A. IDRO Activities Worksheet, AY 2002-2003

Type	Status	Date	Faculty Involved	Department	Title	Cities	Funded	Amount	Funding Agency
Extension/prof. practice		Spring 2003	Lois Warne (student)	A&D	Worked on the interior specifications of the ICCC Universal Design House Project in Fort Dodge	Fort Dodge			
Extension/prof. practice			Stuart Huntington	CRP	Assistance to the cities and counties listed at right through conferences, training sessions & one-on-one contacts	Osage, Buffalo Center, Davenport, Waterloo, Mason City, Des Moines, Pleasant Hill, Grimes, Spencer, Okoboji, West Okoboji, Estherville, Emmetsburg, Hubbard, Council Bluffs, Dennison, Westside, Arcadia, Carroll, Dow City, Earling, Schleswig, Ricketts, Charter Oaks, Ute, Panora, Guthrie Center, Menlo, Stuart, Dexter, Redfield, Yale, Bloomfield, Union, Manly, Rake, Rudd, Britt, Garner, Swaledale, Mason City, Monticello, Anamosa, Cascade, Worthington, Wyoming, Springville, Marshalltown, Toledo, Grinnell, Newton, Kalona, Washington, Riverside, Wellman, West Chester, Perry, Adel, Elkader, Cedar Rapids, Marion, Hiawatha, Atkins, Fairfax, Mapleton, Dennison, Soldier, Dunlap, Ute, Sioux City, Bettendorf, Eldridge, Mount Joy, Williamsburg, Crawford, Carroll, Shelby, Guthrie, Dallas, Davis, Story, Polk, Adair, Benton, Black Hawk, Boone, Bremer County, Calhoun, Cass, Cerro Gordo, Cherokee, Clinton, Decatur, Emmet, Greene, Grundy, Johnson, Worth, Washington, Tama, Monroe, Dickenson, Clay, Jones, Linn, Clayton, Jefferson			

Appendix A. IDRO Activities Worksheet, AY 2002-2003

Type	Status	Date	Faculty involved	Department	Title	Cities	Funded	Amount	Funding Agency
Extension/prof. practice			Susan Erickson	LA Extension	Assistance to the entities listed at right through conferences, training sessions & one-on-one contacts	Ames Ankeny Atlantic Dallas County Farm Defiance Des Moines Dubuque Fort Dodge Grimes Grinnell Hampton Hull Huxley Iowa City Iowa Falls ISU Jefferson Knoxville Luther Mount Ayr New Virginia Newton Ollie Omaha Paullina Scranton Sheldon Sioux City Union Waukon Webster City Williamsburg Woodward			
Non-research	Completed	6/27/02 to 9/10/02	Joern Langhorst, Julia Badenhope, Jeffrey Logsdon	LA	Landscape Master Plan– Center for Community Agriculture, Education & Human Development		Yes	\$12,912	Dallas County Board of Supervisors

Appendix A. IDRO Activities Worksheet, AY 2002-2003

Type	Status	Date	Faculty involved	Department	Title	Cities	Funded	Amount	Funding Agency
Non-research	Completed	6/28/01 to 6/30/02	Paul Anderson	LA	GIS Modeling and Database Mgt.		Yes	\$8,620	Dallas County Board of Supervisors
Non-research	Completed	7/1/02 to 9/20/02	Paul Anderson, Jeffrey Logsdon	LA	Site Suitability Modeling for Aggregate Mining in Dallas County		Yes	\$7,770	Dallas County Conservation Board
PLaCE	Completed		Karen Jeske	CRP	Lake Park, Iowa Community and General Development Plan	Lake Park	Yes	\$2,500	
PLaCE	Completed		Karen Jeske	CRP	Grundy County Comprehensive Plan Update	Grundy County	Yes	\$5,000	
PLaCE	Completed		Karen Jeske	CRP	Story County Fringe Area Studies	Gilbert Nevada	Yes	\$500	
PLaCE	Completed		Riad Mahayni	CRP	Council Bluffs Indicators	Council Bluffs	Yes	\$3,500	
PLaCE	Completed	September 2002	Mark Engelbrecht, Tim Borich, Bruce Bassler, Jeffrey Dolan	Design Adm, CRP, Architecture	Design Recommendations for Selected Buildings on the Town Square in Mount Ayr, IA	Mount Ayr	Yes	\$7,500	National Trust for Historic Preservation
PLaCE	Completed		Susan Erickson	LA Extension	Final Report: Christ Lutheran Church, Jefferson, Iowa	Jefferson	Yes	\$1,000	
PLaCE	Completed		Heidi Hohmann & Mira Engler	LA	New Virginia Park	New Virginia	Yes	\$400	
PLaCE	Completed	Spring 2003	Susan Erickson	LA Extension	Therapeutic gardens for Healthcare Facilities: Franklin General Hospital/Franklin Medical Center	Hampton	Yes	\$3,000	
PLaCE - CRP 414/516	Completed	Fall 2002	Duane Shinn	CRP	Roadside Development: Entrance to the Meskwaki Settlement Tama, Iowa	Tama	Yes	\$1,500	

Appendix A. IDRO Activities Worksheet, AY 2002-2003

Type	Status	Date	Faculty Involved	Department	Title	Cities	Funded	Amount	Funding Agency
PLaCE - urban design studio	Completed		Duane Shinn	CRP	Future of a Small Town: Lake Mills, Iowa	Lake Mills			
PLaCE - studio	Completed	Fall 2002	Dorothy Fowles, Lisa Fontaine	Interior Design & Graphic Design	Fort Dodge Retail Design Project	Fort Dodge	Yes	\$900	Fort Dodge Chamber of Commerce, Webster County Extension Office
Poster presentation		01/12-16/03	Julia Badenhope, Sandra Oberbroeckling	LA Extension	Transportation Research Board Poster Session – “Public Involvement in Transportation”				
Report		01/03	Julia Badenhope, Sandra Oberbroeckling, Nora Ladjahasan	LA Extension, IDRO	Evaluation Summary Report for Community Visioning	Ackley, Carroll, Centerville, Dysart, Decorah, Eldora, George, Marengo, Orange City, Orange City, Parkersburg, Rock Rapids, Rudd, Arnolds Park, Storm Lake, Clarence, Princeton, Red Oak, Urbana, Vinton	Yes	\$21,236	IDOT
Research	Completed	Fall 2002	Nora Ladjahasan	IDRO	Housing Issues of New Hispanic Immigrants	Hampton			
Research	Completed	Fall 2002	Nora Ladjahasan, Mike Miller	IDRO, Admin.	IOWAccess Update		Yes	\$32,500	Iowa Finance Authority

Appendix A. IDRO Activities Worksheet, AY 2002-2003

Type	Status	Date	Faculty Involved	Department	Title	Cities	Funded	Amount	Funding Agency
Research	Completed	FY01-02	Julia Badenhope, Sandra Oberbroeckling	LA Extension	2002 Community Visioning Program	Alburnett Anamosa Cascade Earlham Hiawatha Johnston Le Grand Long Grove Maquoketa Monticello Nora Springs Stanton	Yes	\$258,023	IDOT
Research	Completed	4/1/02 to 9/30/02	Julia Badenhope, Tim Keller, Tim Borich	LA, CRP	Prairie Passage		Yes	\$30,541	IDOT
Research	Ongoing	4/01/02 to 3/31/03	Lois Warne	A&D	Iowa AgrAbility: Innovations that work for the home & farm		Yes	\$150,000	ES-USDA
Research	Ongoing		Lois Warne	A&D	Offer design plans to families to better use their existing space & furnishing				Iowa Easter Seals AgrAbility
Research	Ongoing	01/01 to 12/03	Chiu-Shiu Chan, Riad Mahayni, Ivan Suen, Duane Shinn, Carolina Cruz-Neira	Architecture, CRP, Virtual Reality Applications Center	US-China Cooperative Research: Utilizing Three-Dimensional Data in a Virtual Urban Environment to Support and Evaluate Planning Decisions	Beijing, China	Yes	\$120,000	National Science Foundation
Research	Ongoing	7/23/02 to 12/31/03	Chiu-Shiu Chan, Riad Mahayni, Ivan Suen, Duane Shinn, Carolina Cruz-Neira an	Architecture, CRP, Virtual Reality Applications Center	US-China Cooperative Research: support for undergraduate research assistants	Beijing, China	Yes	\$23,420	National Science Foundation
Research	Ongoing	7/01/02 to 5/31/03	Chiu-Shiu Chan	Architecture	Combining Cognitive Psychology and Virtual Reality to Evaluate Building Performance	Washington, DC	Yes	\$26,904	American Institute of Architects

Appendix A. IDRO Activities Worksheet, AY 2002-2003

Type	Status	Date	Faculty Involved	Department	Title	Cities	Funded	Amount	Funding Agency
Research	Ongoing	8/17/01 to 2/28/03	David Plazak	CRP/CTRE	Process to Collect and Assess Economic Data for the Trunk Highway 61 Corridor Study between Wabasha and Red Wing		Yes	\$15,839	
Research	Ongoing	11/1/02 to 8/31/03	David Plazak	CRP/CTRE	Corridor Mgt. Pilot Project, Phase I		Yes	\$30,000	IDOT
Research	Ongoing	02/11/03 to 10/31/03	David Plazak	CRP/CTRE	Clinton/Fulton Multimodal Bridge Study Economic Analysis		Yes	\$29,699	Howard R. Green Company
Research	Ongoing	7/1/03 to 4/30/04	David Plazak	CRP/CTRE	Access Mgt. Plan for Des Moines MPO	Des Moines	Yes	\$30,000	IDOT
Research	Ongoing	06/03 to 11/30/03	Francis Owusu	CRP	Institutional Culture and the Performance of Public Institutions: Learning from the "Good Performers"		Yes	\$64,000	World Bank
Research	Ongoing		Gary Mattson, Stuart Huntington	CRP	Iowa Places of Distinction: Keys to Success for Iowa's Fastest Growing Rural Areas		Yes	\$20,000	USDA
Research	Waiting for funding approval		Tim Borich, Daniel Otto, I-Shian Suen, Francis Owusu, Paul Anderson	CRP, LA, Econ.	Integrative Planning and Practices for Watershed Water Quality Improvement	Dickinson County	Pending	\$386,625	USDA
Research	Ongoing		Nora Ladjahasan	IDRO	2003 MDO Update				
Research	Ongoing		Nora Ladjahasan, Mary Joyce VeVerka, Jean Jonas	IDRO, Architecture	Dept. of Architecture's Professional Admission Policy & Its Impact on Students' Retention and Graduation		Yes	\$2,500	P&S Council
Research	Ongoing		Nora Ladjahasan, Ivan Suen, Tim Borich	IDRO, CRP, Extension to Communities	CommunityViz Projects	Altoona Perry			

Appendix A. IDRO Activities Worksheet, AY 2002-2003

Type	Status	Date	Faculty Involved	Department	Title	Cities	Funded	Amount	Funding Agency
Research	Ongoing	7/10/02 to 7/15/05	Mimi Wagner	LA	Integrating Social Values in Landscape Change Assessments		Yes	\$23,921	US Department of Forestry–Forest Service
Research	Ongoing	Fall 2002	Tim Keller, Chris Seeger	LA	Preservation of I-80		Yes	\$92,348	IDOT
Research	Ongoing	Fall 2002	Tim Keller, Peter Butler	LA	US 30/Lincoln Highway corridor project		Yes	\$92,348	IDOT
Research	Ongoing	FY02-03	Julia Badenhope, Sandra Oberbroeckling	LA Extension	Community Transportation Enhancement Planning, 2002-2003	Alton, Belmond, Denver, DeWitt, Edgewood, Fairfield, Fredericksburg, Middletown, Mount Ayr, New Hampton	Yes	\$153,746	IDOT
Research	Completed		Mimi Wagner	LA	Cedar Lake Project: Knowledge Assessment Tool	Winterset Madison County	Yes		IDNR
Research	Ongoing		Heidi Hohmann, Tim Keller	LA	Platt District Cultural Landscape Report and Preservation Plan, Chickasaw National Recreation Area	Sulfur, Okla.		\$120,000	US Department of Interior–National Park Service
Web design	Ongoing		Roger Baer, Mike Miller	A&D, Admin.	Hometown Perry Museum Data & Image Mgt. Project	Perry	Yes	\$40,000	Hometown Perry, Iowa (HPI)
Web design			Mike Miller	LA, CTRE	Transportation Reporting and Information Project (TRIP)	Des Moines Iowa City	Yes		IDOT
Workshop	Ongoing			CRP	Nonprofit Management Academy	Clinton County, Des Moines, Sioux City, Story County			
Workshop			Stuart Huntington	CRP	“How to conduct planning and zoning workshops” presented to Extension to Communities CDS				

Appendix B. Sample Community Outreach Project

Final Presentation Franklin General Hospital Hampton, IA

On April 29, 2003, I (Susan Erickson) traveled to Hampton, IA, with Brent Yezeck, my graduate research assistant. We presented final concept proposals to the Building and Grounds Committee, including Brad Shupe, head of maintenance, Chris Eckhoff, head of nursing, and Ron Baker, the new administrator of the facility.



We presented a comprehensive set of ideas for development of their approximately 65-acre campus, including links to a proposed community recreation facility to be built adjacent to the hospital. Details of the proposals are documented in the publication we submitted to them, “Therapeutic Gardens for Healthcare Facilities: Franklin General Hospital/Franklin Medical Center.” This publication was sponsored by Landscape Architecture Extension and IDRO, the Institute for Design Research and Outreach.

Included in the publication is conceptual information about the idea of contact with nature in healthcare facilities, as well as detailed proposals for many different spaces at the facility. They were presented with five 30” x 42” presentation boards which can be used for future development.

I also proposed to them future collaborations such as studies of the effects of nature contacts with patients and documenting medical outcomes.

Staff/personnel were very pleased with the results and somewhat overwhelmed with the unexpected detail and large scope of ideas. This small-town facility, somewhat progressive in nature, hopes to pursue these ideas in future development.



Further project information is available in published form by contacting:
Nora Ladjahasan
IDRO Research Associate
326 College of Design
Iowa State University
Ames, IA 50011-3091
(515) 294-0734