

Institute for Design Research and Outreach (IDRO)

Annual Report FY 2004

Annual Report FY 2004

Institute for Design Research and Outreach (IDRO)

College of Design

Iowa State University

Prepared by

Nora Ladjahasan

Heather Sauer

July 2004

Table of Contents

Executive Summary	i
Background	1
Personnel	1
Functions	2
I. Research	4
<i>Completed Projects</i>	5
<i>Ongoing Research Projects</i>	6
<i>Ongoing IDRO Projects</i>	7
<i>Pending Projects</i>	8
II. PLaCE Program	10
<i>Projects Scheduled for 2004-2005 Academic Year</i>	12
III. Applied Research and Extension Activities	12
<i>Community and Regional Planning Extension Activities</i>	14
<i>Interior Design Extension Activities</i>	15
<i>Landscape Architecture Extension Activities</i>	16
IV. Distance and Continuing Education	18
Outlook for the Future	21
Appendix	A-1
<i>Figures</i>	
Figure 1. Total Number of Proposals Submitted	4
Figure 2. Total External Funding, College of Design	4
Figure 3. Distribution of External Funding	5
Figure 4. Number of Ongoing Research Projects (Funded and Unfunded)	7
Figure 5. Distance Education Enrollment Goal vs. Actual	20
Figure 6. Total Distance Education Enrollment	20
<i>Maps</i>	
Map 1. Listing of Cities by County with IDRO/Design Extension Research or Outreach Contacts or Projects	2
Map 2. Location of Nonprofit Management Academy Workshops	13
<i>Tables</i>	
Table 1. Counties and Communities Served through IDRO/Design Extension Research or Outreach Efforts	3
Table 2. List of Pending Projects	9
Table 3. Status of Nonprofit Management Courses by Location	13

Executive Summary

Since its creation in 1993, the Institute for Design Research and Outreach (IDRO) has served as the research and outreach arm of the College of Design at Iowa State University. Its primary mission is to support the college and its faculty, staff and students in their research, extension, distance education and outreach activities.

The institute facilitates contact between College of Design faculty and outside organizations and administers the college's Extension program. Through IDRO, faculty and students work closely with citizen groups, businesses and communities in addressing real-world problems and in exploring opportunities for new research initiatives. The institute emphasizes the integration of applied research into the instructional and outreach elements of the college and its four departments: architecture, art and design, community and regional planning, and landscape architecture.

This report describes IDRO's efforts to fulfill its mission from July 1, 2003 through June 30, 2004. Among the highlights:

- IDRO research, extension and outreach activities served 36 more cities (185 of 950 total in Iowa) and 10 more counties (80 of 99) than in FY 2003.
- Nine PLaCE (Partnering Landscape and Community Enhancement) projects were accomplished as a part of off-campus studios or graduate projects involving seven cities (Ames, Cedar Rapids, Clear Lake, Earlville, Mason City, McCallsburg, Mount Ayr and Sergeant Bluff) and a seven-county region in eastern Iowa. One project in Humboldt is ongoing. Seven more applications remain on file to be studied by future studio classes or combinations of graduate assistants and extension staff.
- The Design Extension model of the Nonprofit Management Academy is continuously adapted for use in multiple locations throughout Iowa. Academies were held in eight cities (Ames, Des Moines, DeWitt, Dubuque, Iowa City, Marshalltown, Sioux City, and Waterloo) in FY 2004. A total of 988 participants attended the workshops, with 22 certifications in nonprofit management issued. In aggregate, these workshops generated \$55,095 in revenue.
- A greater number of students registered for courses offered as distance and continuing education classes through the use of DVD. An average of 45 students registered as distance learners in the last two semesters (fall 2003, spring 2004).
- The College of Design received a three-year, \$45,000 grant from the WOI distance education initiative to participate in an inter-institutional master's degree in community development. WOI approved \$20,000 in funding for FY 2005, \$15,000 for FY 2006 and \$10,000 for FY 2007.
- More proposals were submitted this year (n=47) than in FY 2003. Eighteen (38%) were awarded funds amounting to \$2.4 million. Proposals representing another \$2.5 million are pending.
- Twenty sponsored research and outreach projects began in FY 2004. Four projects were completed and 19 are still in progress, including three that were initiated in FY 2003.
- The College of Design undertook a survey of all of its alumni from the past 25 years (1978-2003) (n=8,297). A Web-based survey was developed that includes issues related to alums' educational experiences at Iowa State, current careers and trends in the design professions. The survey began in May 2004 and will continue into the 2004-2005 academic year.

- A multidisciplinary team from the College of Design, working with faculty from Beijing Polytechnic University, received continued funding from the National Science Foundation to create a virtual reality model of Beijing, People's Republic of China. When completed, the three-dimensional virtual model will be used to guide urban planning and development in Beijing.
- Work continues on testing CommunityViz software in Altoona and Perry.
- CommunityViz software will be used to study Fort Madison's economy and future.
- The Community Visioning Program continues with Iowa Department of Transportation funding. Twelve communities are participating in the program in calendar year 2004.
- Work continues on the Interstate 80 corridor management studies for the Iowa Department of Transportation.

Background

The Institute for Design Research and Outreach (IDRO) is the research and outreach arm of the College of Design at Iowa State University. It was created in 1993 to support the college's faculty, staff and students in their research, extension, distance education and outreach activities.

The institute establishes and facilitates contact with outside organizations to integrate applied research into instructional and outreach elements of the college and its four departments: architecture, art and design, community and regional planning, and landscape architecture. Through IDRO, faculty and staff work closely with citizen groups, businesses and communities in addressing real-world problems and in exploring opportunities for new research initiatives.

Personnel

Mark Engelbrecht, dean of the College of Design, serves as the institute's director. IDRO associate director Timothy Borich serves as the primary contact between faculty members and potential community and organizational research partners/clients. Borich is also the College of Design's associate dean for research and outreach.

Nora Ladjahasan is the institute's full-time research associate. She assists faculty and students in complying with the university's requirements in conducting research, collecting and analyzing data and preparing reports. Heather Sauer, a full-time communications specialist, provides support to administrators, faculty and staff in writing and editing a wide range of documents, including newsletters, news releases, research and studio reports, journal articles and grant proposals. She divides her time between the institute and the college, but over the past year her work for the college has greatly exceeded time spent on IDRO-related projects. Jiwon Han worked full time through December 31, 2003, as a graphic designer for a range of online and print communications, including portions of the college and IDRO Web sites, GIS Certificate Program Web site, newsletters, reports, posters and brochures. Budget constraints led the college to eliminate Han's full-time position at the end of 2003; she moved to a half-time, hourly position from January through April 2004. The institute is working with the college to resolve the need for graphic design assistance in the coming year.

Donovan Olson, part-time distance-education coordinator, helps schedule off-campus sections of college courses, apply for continuing education units, and promote the college's distance education programs to Iowa community college students and professionals. He also supervises the real-time recording and distribution of courses on DVD to off-campus learners. Sandra Oberbroeckling, program coordinator for Landscape Architecture Extension, acted as distance education coordinator in spring 2004 while Olson was on leave.

Design Extension faculty involved in research and outreach work are assistant professor Christopher Seeger and lecturer Susan Erickson, both landscape architecture; associate professor Stuart Huntington (recently retired) and assistant professor Monica Haddad, both community and regional planning; and associate professor Lois Warne, interior design. They conduct studio projects, workshops and other outreach activities with communities and funding agencies. In the past year, some of these projects involved College of Design students, which served the dual purpose of providing hands-on learning while supporting Iowa's communities. Krishna Das, based in the Johnson County Extension Office in Iowa City, has a part-time staff position with IDRO to coordinate, promote and expand the Nonprofit Management Academy throughout Iowa.

Functions

IDRO focuses on four functions: research, extension, distance education and outreach. This report describes how well IDRO performed these four functions in FY 2004. Among the five faculty members with extension faculty appointments (two each from the departments of community and regional planning department and landscape architecture and one from the art and design department), IDRO served 36 more cities compared to last year. Nineteen percent of the cities in the entire state (185 out of 950 cities) were contacted for extension, outreach and/or research purposes. These cities are distributed among 81 percent (n=80) of Iowa's 99 counties.

At the county level, there were 11 counties with PLaCE projects and 69 counties with IDRO/extension/research/outreach projects. Table 1 lists all of the counties and communities served. Map 1 shows that these contacts were well-dispersed around the state. However, more emphasis should be placed on making contacts in the southern and upper northeast and northwest parts of the state.

Map 1. Listing of Cities by County with IDRO/Design Extension Research or Outreach Contacts or Projects

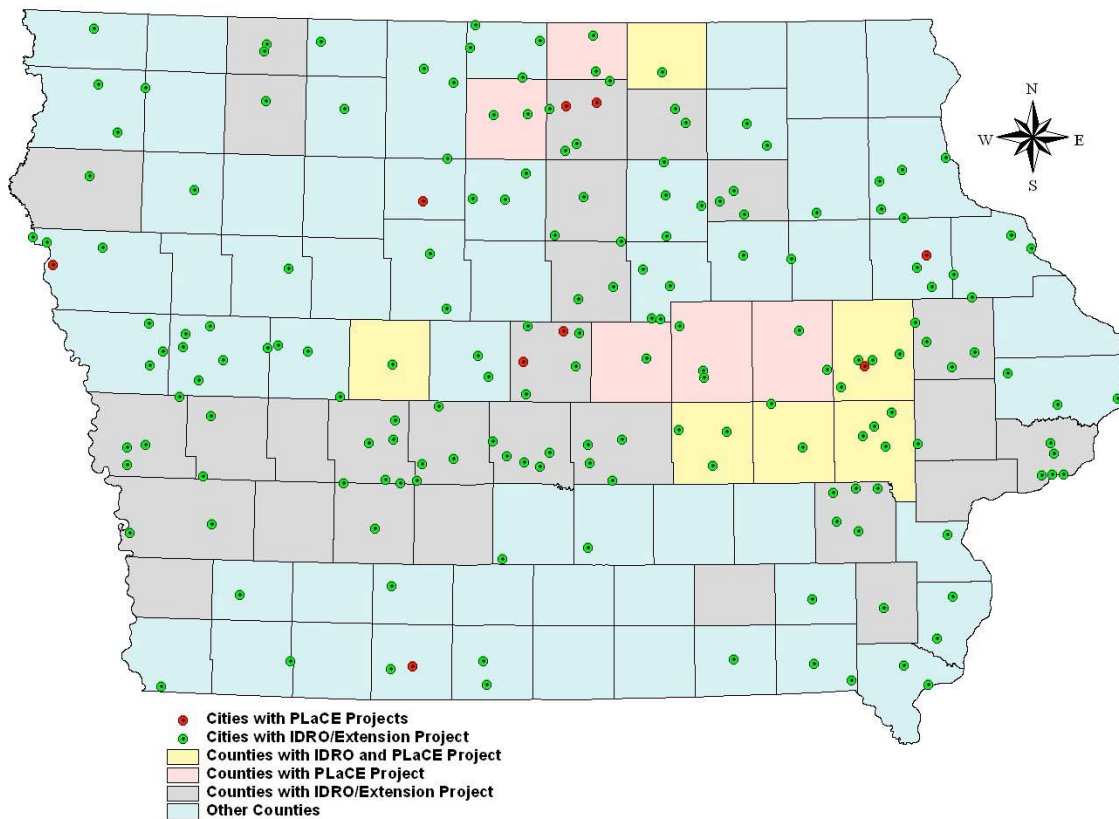


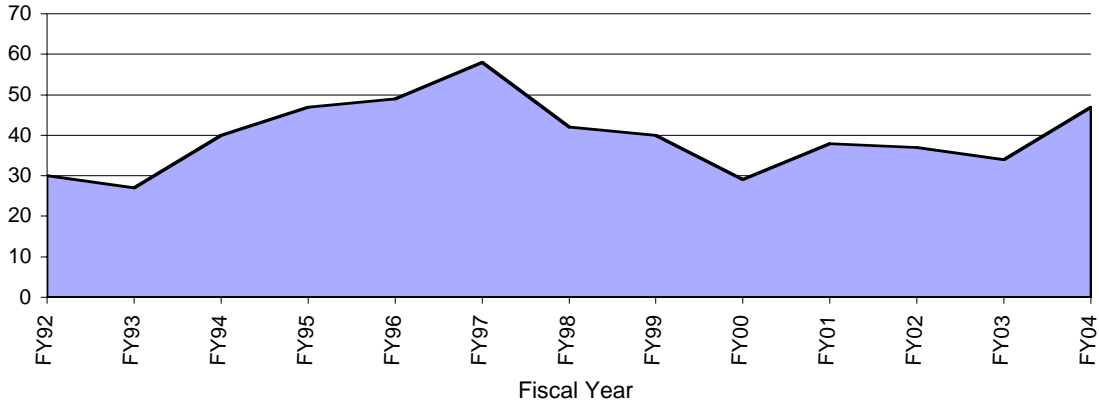
Table 1. Counties and Communities Served through IDRO/Design Extension Research or Outreach Efforts

ADAIR COUNTY	Spencer	Estherville	Monroe	MONTGOMERY COUNTY	Story City
Adair	CLAYTON COUNTY	FAYETTE COUNTY	Newton	Red Oak	Zearing
Greenfield	Clayton	Oelwein	Prairie City	MUSCATINE COUNTY	TAMA COUNTY
Stuart	Elkader	FLOYD COUNTY	JEFFERSON COUNTY	OBRIEN COUNTY	Gladbrook
AUDUBON COUNTY	Strawberry Point	Charles City	Fairfield	Sheldon	Tama
BENTON COUNTY	Volga	Rudd	JOHNSON COUNTY	PALO ALTO COUNTY	Toledo
Atkins	CLINTON COUNTY	FRANKLIN COUNTY	Iowa City	Emmetsburg	TAYLOR COUNTY
Vinton	Clinton	Oakland	North Liberty	PLYMOUTH COUNTY	Dayton
BLACK HAWK COUNTY	DeWitt	Washington	Solon	LeMars	UNION COUNTY
Waterloo	Lost Nation	FREMONT COUNTY	Tiffin	POLK COUNTY	Creston
BOONE COUNTY	CRAWFORD COUNTY	Hamburg	JONES COUNTY	Altoona	VAN BUREN COUNTY
Boone	Charter Oak	GREENE COUNTY	Anamosa	Des Moines	Pleasant Hill
Luther	Denison	Jefferson	Cass	Grimes	Plymouth
BREMER COUNTY	Dow City	GRUNDY COUNTY	Monticello	Pleasant Hill	WAPELLO COUNTY
Bremer Station	Ricketts	Beaman	Wyoming	Runnells	WASHINGTON COUNTY
Denver	Schleswig	Conrad	KOSSUTH COUNTY	Urbandale	Kalona
Waverly	Westside	Grundy Center	Bancroft	POTTAWATTAMIE COUNTY	Riverside
BUCHANAN COUNTY	DALLAS COUNTY	Wellsburg	Lu Verne	Council Bluffs	Washington
Jesup	Adel	GUTHRIE COUNTY	Titonka	Oakland	Wellman
BUTLER COUNTY	Dexter	Guthrie Center	LEE COUNTY	POWESHIEK COUNTY	West Chester
Allison	Perry	Menlo	Fort Madison	Brooklyn	WEBSTER COUNTY
Greene	Redfield	Panora	West Point	Grinnell	Dayton
Parkersburg	DAVIS COUNTY	Yale	LINN COUNTY	Montezuma	Fort Dodge
Shell Rock	Bloomfield	HANCOCK COUNTY	Cedar Rapids	RINGGOLD COUNTY	WINNEBAGO COUNTY
CARROLL COUNTY	DECATUR COUNTY	Britt	Fairfax	Benton	Buffalo Center
Arcadia	Davis City	Garner	Hiawatha	Mount Ayr	Forest City
Carroll	Decatur City	HARDIN COUNTY	Marion	SAC COUNTY	Lake Mills
Coon Rapids	DELAWARE COUNTY	Ackley	Springville	Sac City	Rake
CASS COUNTY	Delhi	Eldora	LOUISA COUNTY	SCOTT COUNTY	WOODBURY COUNTY
CEDAR COUNTY	Earlville	Hubbard	Grandview	Bettendorf	Moville
West Branch	Edgewood	HARRISON COUNTY	LYON COUNTY	Blackhawk	Riverside
CERRO GORDO COUNTY	Hopkinton	Calhoun	Rock Rapids	Davenport	Sergeant Bluff
Clear Lake	DES MOINES COUNTY	Dunlap	MADISON COUNTY	Eldridge	Sioux City
Mason City	Mediapolis	Logan	MARION COUNTY	Mount Joy	WORTH COUNTY
Plymouth	Middletown	Missouri Valley	Dallas	SHELBY COUNTY	Manly
Swaledale	DICKINSON COUNTY	HENRY COUNTY	MARSHALL COUNTY	Earling	Northwood
Thornton	Okoboji	Mount Pleasant	Marshalltown	Shelby	WRIGHT COUNTY
Ventura	West Okoboji	HUMBOLDT COUNTY	MILLS COUNTY	SIOUX COUNTY	Belmond
CHEROKEE COUNTY	DUBUQUE COUNTY	Humboldt	MITCHELL COUNTY	Alton	Clarion
Cherokee	Cascade	IOWA COUNTY	Osage	Hull	Goldfield
CHICKASAW COUNTY	Dubuque	Dayton	MONONA COUNTY	STORY COUNTY	
Fredericksburg	Durango	Williamsburg	Mapleton	Ames	
New Hampton	Worthington	JASPER COUNTY	Soldier	Colo	
CLAY COUNTY	EMMET COUNTY	Colfax	Ute	Huxley	

I. Research

The college has recorded an average of 40 grant proposals per year over the past 12 years (from FY 1992 to FY 2004). This year, 47 proposals were submitted—an increase of 38 percent over FY 2003 (n=34) (Figure 1). Of the proposals submitted, 57.4 percent were categorized as research and the rest as non-research. Non-research proposals refer to those that are used for instructional and training purposes (e.g., PLaCE projects), extension and outreach.

Figure 1. Total Number of Proposals Submitted



Of the 47 proposals submitted, 18 (38%) were awarded funds amounting to \$2.4 million, a 50 percent increase over last year's total (\$1.6 million in FY 2003) (Figure 2). Another \$2.5 million awaits project approval for FY 2005. The community and regional planning department has led the college in external funding in both research and outreach for three consecutive fiscal years (FY 2002 to FY 2004). It is followed by landscape architecture, art and design, architecture and design administration (Figure 3).

Figure 2. Total External Funding, College of Design

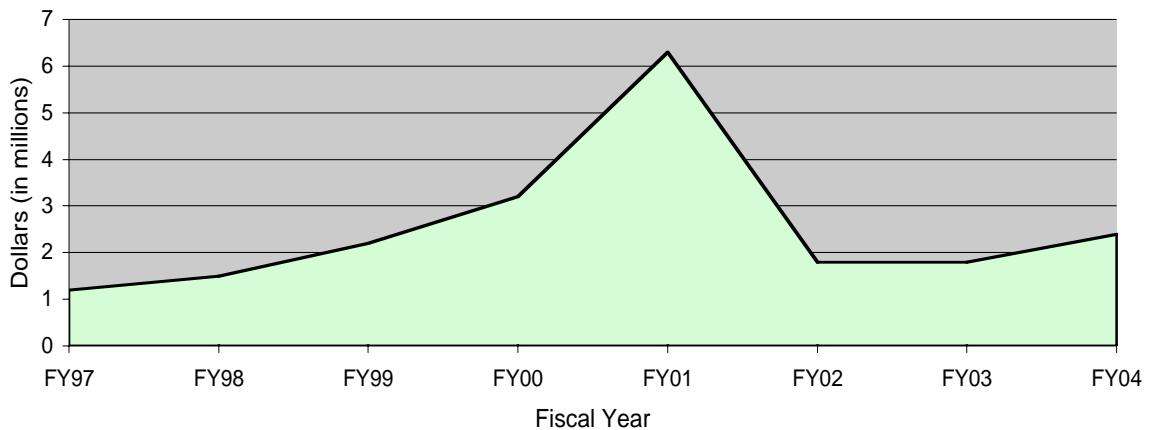
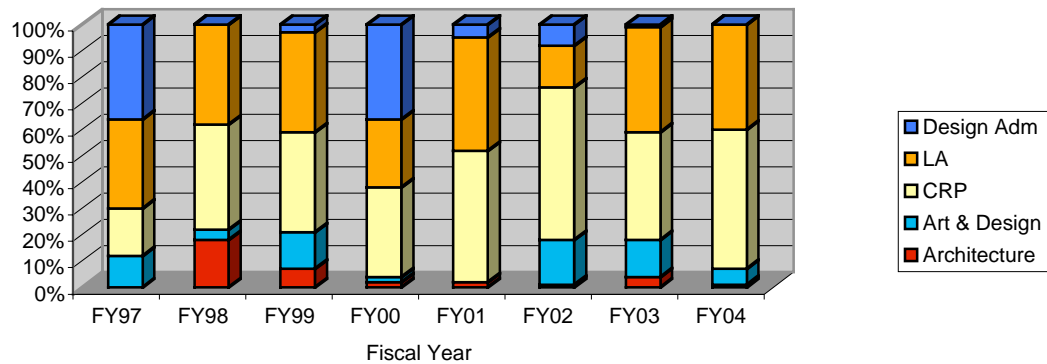


Figure 3. Distribution of External Funding



Completed Projects

Twenty sponsored research and outreach projects (not including PLaCE projects) were initiated in FY 2004. Of these, four were completed.

Hometown Perry Web Site

The original Hometown Perry project involved the development of a Web site for the Hometown Perry, Iowa (HPI) museum that illustrates the history and development of the town of Perry, including thousands of photos and maps, and the stories of immigrants who arrived in the 19th century. The site provides material in several categories corresponding to a timeline of significant periods in Perry’s history. Users can search the site for extensive information on any of these topics in any of the time periods. The site also serves as a platform for a virtual museum that not only showcases HPI’s actual physical exhibits in and around Perry, but also provides a location for exhibits that may be in digital form only. This year’s project involved testing the Web site and making modifications prior to public launch. The project was administered by design administration and funded by HPI.

Community Visioning Impact Assessment

Sponsored by the Iowa Department of Transportation, the “Impact Assessment of Community Visioning” was a collaborative effort by the departments of landscape architecture, community and regional planning, and IDRO. Members of the steering committees who participated in the visioning process in their respective communities were contacted by either phone or e-mail to solicit their perspectives on the effectiveness of the program to their communities and to their personal lives. Thirty-three communities were included in this research. A summary report was produced that presents the results of the evaluation.

Loess Hills Bird Study

This project, titled “Avian response to prairie restoration in the Loess Hills of western Iowa,” was designed to examine habitat use and reproductive success at the Nature Conservancy’s Broken Kettle Grasslands Preserve. The objectives of the study were to quantify vegetation response to clearing, relate avian habitat use and abundance to a gradient of grassland habitat conditions as defined by local characteristics and landscape context, and to estimate nest success for common grassland bird species and relate variation in nest success to local habitat conditions and landscape context. This project was administered by the department of landscape architecture and sponsored by the Iowa Department of Natural Resources (US Fish and Wildlife Service).

Success Factors Among Iowa Communities

This study, conducted by the department of community and regional planning with assistance from two research associates, including IDRO's Ladjahasan, revealed strategies that are successfully keeping some rural Iowa Main Streets viable. Funded by the US Department of Agriculture through the Community Vitality Center at Iowa State University, the research incorporated and updated data from a 1983 Iowa State study. It also included a survey of 77 Iowa county seat towns and field case studies of eight communities: Algona, Centerville, Corning, Greenfield, Hampton, Manchester, Mount Pleasant and Orange City. IDRO published a report, "Towns of Purpose: Community Vitality Among Iowa's Rural County Seat Towns," detailing the results of the study.

Ongoing Research Projects

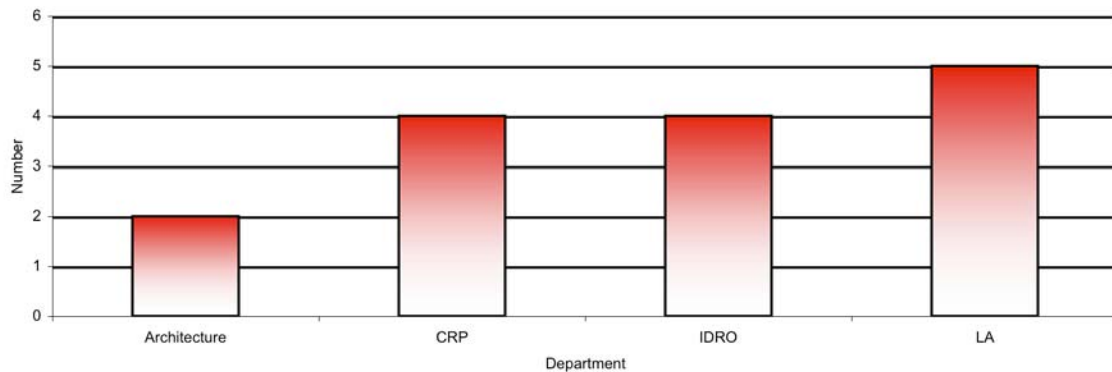
Nineteen projects are still in progress within the College of Design. Sixteen of these were initiated this year and three were carried over from previous years.

Three of the 19 projects are considered non-research. Of the three, two are funded by the US Department of Agriculture (USDA) and are multidisciplinary in nature. The "Master's Degree Program in Community Development – Model of Online Collaborative Inter-Institutional Degree" will be administered by the departments of sociology and community and regional planning, while "Iowa Agrability: Innovations that Work for Home and Farm" will be a collaborative effort of the departments of human development and family studies, industrial education and technology, and art and design. The third non-research project, "Iowa Geospatial Extension Education Program," is a joint effort of five departments: Extension to Communities, agronomy, Extension to Youth, plant pathology, and community and regional planning. This project officially will begin on July 1, 2004, but was under development in AY 2003-2004.

Fifteen research projects that were started this year are still active. One project (Beijing virtual reality planning tool) has been carried over from previous years. Five of these projects are being spearheaded by the department of landscape architecture, three by community and regional planning, three by the department of architecture and two by IDRO (which has one externally funded and one internally funded) (Figure 4). Sixty percent of these projects have external funding amounting to approximately \$1 million.

Funding for landscape architecture projects comes from the Iowa Department of Transportation (IDOT) and USDA. The community and regional planning projects are being funded by the Howard Green Company, IDOT and World Bank. The architecture department's ongoing research is funded by the Graham Foundation and the National Science Foundation. The ongoing IDRO externally funded research is sponsored by Lee County. All but two of the ongoing projects cover the entire state of Iowa. The exceptions are "Institutional Culture and the Performance of Public Institutions: Learning from the 'Good Performers'" (planning project conducted in Ghana with funding from the World Bank) and the College of Design Alumni Survey (IDRO project involving contacts of all College of Design alumni from the past 25 years, funded internally in part by College of Design Career Services). For additional information, see the Appendix.

Figure 4. Number of Ongoing Research Projects (Funded and Unfunded)



Ongoing IDRO Projects

College of Design Alumni Survey

The College of Design alumni survey is a Web-based survey of all College of Design alumni from the past 25 years (1978 to 2003) (n=8,297) aimed at evaluating the college's existing programs and guiding its efforts to improve design education at Iowa State University, as well as enhancing the college's relationship with its alumni. The project was developed throughout AY 2003-2004 and began in May 2004. The survey includes questions relating to alums' educational profile, career information, recognition, professional development, academic assessment of Iowa State/College of Design, the impact of global influences/study abroad, willingness to participate in networking with current students, and the effectiveness of the college's communications. The survey is online at www.design.iastate.edu/survey/alumni.html; alumni will be able to complete the survey through September 2004. This project is administered by IDRO and design administration.

Perry and Altoona CommunityViz Projects

IDRO began these projects in August 2002 with the assistance of Ivan Suen, assistant professor of community and regional planning. IDRO/CRP personnel first attended meetings with community leaders and helped them envision the future of their communities. Secondary data for Perry such as block-level demographic data and assessor's parcel information then were gathered and formatted for testing with the CommunityViz Policy Simulator module. Different scenarios now have been created, and the results will be presented to the leaders to test the validity of the software. A model of a new city center in the Altoona downtown district was created using the Site-Builder 3D module of the software.

Fort Madison CommunityViz Project

Funded by Lee County Economic Development, this project is aimed at developing a working geographic information systems (GIS) model for the community of Fort Madison utilizing the CommunityViz software.

Institutional Culture and Performance of Public Institutions

Francis Owusu, assistant professor of community and regional planning, began this World Bank-funded project in summer 2003 to study the relationship between government organizations' institutional culture and the provision of public services. Using the African country of Ghana as an initial example, this project—titled “Institutional Culture and the Performance of Public Institutions: Learning from the ‘Good Performers’”—aims to demonstrate to poorly performing institutions the more efficient processes and characteristics of good performers in hopes of reforming their institutional culture.

Archive of Planning Documents

IDRO has become a state repository for comprehensive plans and other planning documents. This is the outcome of a survey of local land-use planning in Iowa conducted in fall 1999. At present, about 250 cities have submitted copies of their most current planning documents to IDRO. The institute has about 115 comprehensive plans created or updated from 1965 to 2001; 150 zoning ordinances; 130 subdivision regulations; and 70 community builder plans. Also available are studio/community reports or studies prepared by College of Design students. Additionally, IDRO has received planning documents from 45 counties, including nearly 30 county comprehensive plans, 30 county zoning ordinances and other planning documents. The institute continues to collect planning documents from both cities and counties as well as research reports and studies done by College of Design graduate students and studio classes.

Human Subject Compliance

While this is not a specific project, the institute is actively guiding faculty, staff and students in complying with the university's human subject requirements. The research associate is available to anyone who needs assistance with human subject certification and forms. She is also a member of the university's Institutional Review Board (IRB), a committee that approves/disapproves protocols that deal with human subjects.

Pending Projects

Another seven projects were submitted this year and are still waiting for funding approval from sponsoring agencies. Four of these projects were submitted by the department of community and regional planning; the other four are joint ventures of landscape architecture with other departments in the university. If these projects are approved, they will bring an additional \$2.5 million to the college. Funds are being solicited from national agencies such as the National Science Foundation, USDA, US Environmental Protection Agency and Transportation Research Board. Some research proposals also were submitted to statewide agencies such as the Iowa Department of Natural Resources and IDOT (Table 2).

Table 2. List of Pending Projects

Department	Project Title	Amount	Sponsoring Agency
CRP	Acquisition of Access Rights	\$25,000	Transportation Research Board
CRP	Simulating Complex Spatial Systems with an Emphasis on Natural Hazards Mitigation to Support Planning Decisions	\$536,881	National Science Foundation
CRP	Streams for Kids: Involving Iowa Communities in Protecting the Quality of Wading Streams	\$64,226	Environmental Protection Agency, Region 7
LA	Work Order #2 Community Transportation Enhancement Planning, 2004-2005	\$776,623	Iowa Department of Transportation
LA, Natural Resource Ecology & Management	Changes in Land Use: Land Cover of the Driftless Area and Implications for Forest Biodiversity Conservation	\$99,777	Environmental Protection Agency, Region 7
Natural Resource Ecology & Management, LA	Development of the Iowa Rivers Information System (iris)	\$74,600	Iowa Department of Natural Resources
Plant Pathology, LA	Safeguarding American Agriculture From New and Emerging Diseases and Pests: A GIS and Web Base	\$999,966	USDA-NRI

II. PLaCE Program

The Project for Partnering Landscape and Community Enhancement (PLaCE) was initiated in August 2000. The PLaCE program aims to enhance and promote the quality and character of Iowa's landscapes and communities. This goal is rooted in support of economic competitiveness as well as proper development and stewardship. Unique, dramatic enhancements to the landscapes and communities of Iowa are viewed as ways to attract and retain a new group of talented and energetic citizens, a resource very much in demand for the state's future.

During the 2003-2004 academic year, 10 PLaCE projects were accomplished, and several more remain on file to be studied by future studio classes, graduate assistants or extension staff.



Ioway Trail Plan (\$4,600): Susan Bradbury, Peter Butler, Susan Erickson

A landscape architecture studio course and a community and regional planning studio course worked together during fall 2003 to create this master plan for a seven-county area along the Iowa River, focusing on community involvement, recreation, and tourism planning. This master plan has provided guidance and direction to the Ioway Trail Committee as it moves forward with future plans. The combined studio class created an icon for the trail, which can be viewed on the committee's Web site, www.iowaytrail.org.

College of Design student with examples of trail icon (top) and other trail signage developed for Ioway Trail.

McCallsburg Comprehensive Plan (\$4,020): Jerry Knox, Frank Owens

A community and regional planning class, led by faculty member Jerry Knox and advised by Frank Owens with ISU Extension to Communities, prepared a comprehensive plan for the city of McCallsburg in northern Story County. This small community of 320 residents is facing many of the problems common to Iowa towns with dwindling populations. The comprehensive plan provided ideas for ways the community might cope with problems linked to economic and demographic trends and provided the students opportunities to grapple with issues that will be important in Iowa's future.

Sergeant Bluff Holman Block Preservation Plan (\$2,997): Jim Grant

A community and regional planning class developed "A Future Vision" for Sergeant Bluff. The Sergeant Bluff Museum and Historical Society made a request to Iowa State University to help with the Holman Block Preservation Project. In response, the class, led by lecturer Jim Grant, performed a feasibility study and produced a set of recommendations for the community of Sergeant Bluff, including a study of the historic Holman Block. The class also delivered a downtown revitalization plan and a community development plan.

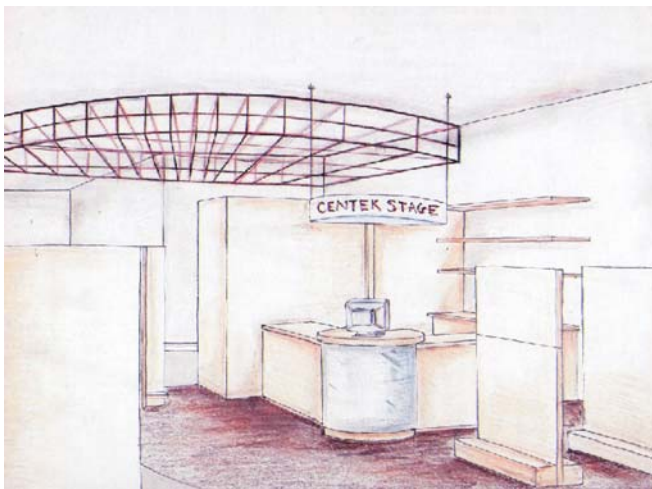
Earlville Park (\$1,500): Peter Butler, Heidi Hohmann, Ashley Kyber

A landscape architecture studio completed conceptual designs for Conrad Field City Park in Earlville. The park, about seven acres in size, was a former agricultural field located in the south-central part of Earlville and accommodates a significant amount of stormwater drainage. The town submitted a REAP grant for development and acquisition of the land, and the students'

projects were intended to address stormwater issues and bring new ideas to the town's park-planning process. The students visited the town and the park site in late March 2004. Over the next five weeks, they developed individual conceptual designs for the park by investigating the town's history, researching its natural and cultural resources, and interviewing townspeople about their ideas for the park and community. In late April, a group of students presented some of the 36 completed conceptual designs at a town meeting at the Earlville Fire Department. The students' designs were compiled into an illustrated report, which was provided to the town as a final product, along with seven illustrative posters to help build town awareness of the project.

Cedar Rapids Retail Design: Dorothy Fowles, Jin Feng, Lisa Fontaine

The Cedar Rapids nonprofit Renaissance Group sought help through the PLaCE program to complete this retail design project. Students in the interior design senior studio and graphic design practicum spent fall semester 2003 developing proposals to upgrade and unify the interior and exterior appearance of six downtown Cedar Rapids businesses, which included recommendations for improvements to storefronts/façades, display windows, signage, interior spatial organization, lighting, merchandise displays, and materials such as flooring, wall coverings and ceiling treatments. Students produced design boards and a final written report. The report was delayed significantly; IDRO reimbursed the Renaissance Group for the partial payment it made at the start of the project and did not collect the remainder.



Proposed design for checkout area of Center Stage, a costume sales and rental store in downtown Cedar Rapids.

Hospice of North Iowa (\$800): Susan Erickson

This hospice facility in Mason City requested assistance in planning a therapeutic garden in tandem with a building expansion project. Susan Erickson, together with senior landscape architecture student Liz Nielsen, prepared a report and a conceptual illustrative site plan to guide development and planning for this garden space. A local practitioner was involved in planning meetings and has agreed to oversee implementation of the garden plan.

Humboldt High School Cross Country Trail (\$600): Susan Erickson

The Humboldt Community School District requested assistance in planning for a trail to be used by the cross country team when training within the school campus. Susan Erickson and senior landscape architecture student Amy Krause are preparing a report and display boards to assist the school in planning for development of this trail. They hope the project will be expanded to accommodate use by the community as a wellness and fitness trail and by the science teachers at the school as an outdoor learning space.

Green Hills Gazebo (\$300): Susan Erickson

This retirement community requested assistance in planning for future site development and in building consensus within a committee of residents. Susan Erickson, together with senior landscape architecture student Amy Krause, prepared illustrative display boards to guide the resident committee in its decision-making.

Mount Ayr Retail Design: Dorothy Fowles, Jin Feng

This PLaCE project, a collaboration with Ringgold County Extension, focused on revitalizing Mount Ayr's historic downtown square. Interior design students researched historic preservation standards and techniques to provide recommendations for renovating five downtown Mount Ayr businesses. They produced design boards and a final written report. The report was significantly delayed, and IDRO did not request payment for the project.

Clear Lake "Clear Project" (\$100)

A graphic design graduate student undertook this project as an independent study in spring 2004. She developed a set of interactive exhibits for the Clear Project, an educational initiative to promote awareness of Clear Lake's natural environment and ongoing cleanup efforts.

*Projects Scheduled for the 2004-2005 Academic Year***Fort Madison Rodeo: Carl Rogers**

- Provide recommendations on improvements at rodeo grounds

Greene County Fair Association

- Development of entryway for county fairgrounds

Hancock Soil & Water Conservation District

- Development of hands-on displays to educate residents about water quality issues

Mitchell County Conservation Board: Chris Seeger

- Concept planning for new campground

Ann Smeltzer Charitable Trust: Maruja Torres

- Provide recommendations on historic Ann Smeltzer home in Fort Dodge

Thomas J. Murphy Calendar Company

- Investigation of possibilities for archival display of calendar art in Red Oak

Worth County Fairground: Chris Seeger

- Development of community demonstration and outdoor classroom garden

III. Applied Research and Extension Activities**Nonprofit Management Academy**

In 2003-2004, the Nonprofit Management Academy provided training in eight cities around Iowa: Ames, Des Moines, DeWitt, Dubuque, Iowa City, Marshalltown, Sioux City and Waterloo (Map 2). Most of the workshops took place in the central eastern part of the state. An average of six workshops were conducted in each of the cities; Iowa City and Waterloo held 11 and 12 workshops respectively. A total of 988 participants from nonprofit human-services groups, hospitals, government agencies, churches, private schools, arts organizations, environmental groups, and other nonprofit organizations were trained in such varied topics as financial management, governance and leadership, diversity issues, technology management and effective supervision. Of these, 22 completed certification in nonprofit management (requires that participants complete a specific number of courses/continuing education units). The eight academies generated \$55,095 for FY 2004. For details on each academy by city, see Table 3.

Map 2. Location of Nonprofit Management Academy Workshops

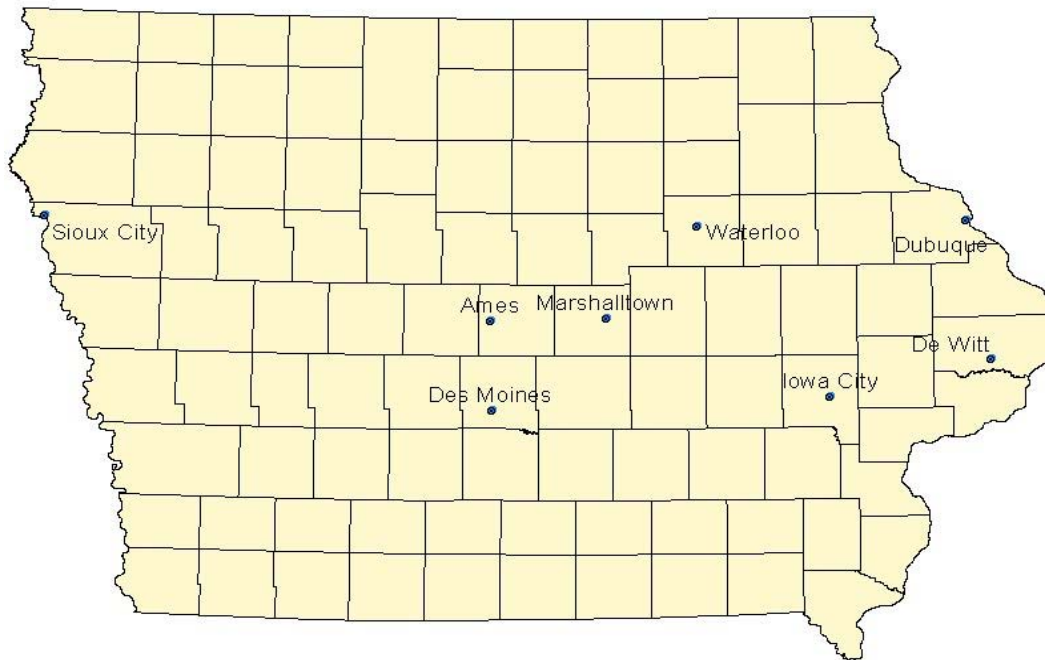


Table 3. Status of Nonprofit Management Courses by Location

Cities	Total Number of Participants	Total Number of Workshops	Individual Course Certificates Mailed	Completion Certificates Mailed (for certification in nonprofit mgmt)	Amount Generated
Ames	80	4	78	11	\$4,000
Des Moines	140	7	130	4	\$9,625
DeWitt	30	2	25	1	\$1,500
Dubuque	60	4	16	0	\$3,600
Iowa City	250	12	150	5	\$15,130
Marshalltown	32	1	26	0	\$1,800
Sioux City	136	10	32	1	\$5,440
Waterloo	260	11	51	0	\$14,000
Total	988	51	508	22	\$55,095

GIS Short Courses

The College of Design's new Geographic Information Systems (GIS) Graduate Laboratory, located in 526 Design, is being used to conduct four GIS Short Courses for summer 2004. This is a collaborative effort between the department of community and regional planning and the Iowa Geographic Information Council (IGIC). Each short course is a two-day hands-on experience. Topics covered are the basics of ArcGIS 8.3, advanced ArcGIS 8.3, exploring Spatial Analyst from ArcGIS 8.3, and understanding 3D Analyst from ArcGIS 8.3. Participants may elect to receive continuing education units. Monica Haddad, assistant professor of community and regional planning and extension faculty, is in charge of these GIS courses and the lab.

Community and Regional Planning Extension Activities

Faculty Changes

Stuart Huntington, longtime extension member from the community and regional planning department, retired in May 2004. His presence will be missed on campus and throughout the state.

Monica Haddad was hired in fall 2003 to oversee the new GIS lab, teach GIS courses, and develop GIS extension and outreach programs for communities in Iowa.

Planning and Zoning

A leader in Extension to Communities, Huntington continued his planning and zoning workshop sessions, bringing needed educational material to local officials. He also continued to chair the Community Management Team for Extension to Communities until his retirement. Huntington will serve as the president of the Iowa Chapter of the American Planning Association in 2005.

Developing a Decision Support System for School Districts in Great River AEA 16

Haddad will work with Gayle Olson to develop a Decision Support System for school districts in Great River AEA 16.

Site Selection Criteria for the Swaledale Bio Village Project

Haddad worked on this project during AY 2003-2004 with Extension to Communities specialist Robert Cole before his retirement.

Dallas County Housing Trust

Haddad will be working with Extension to Communities specialist Frank Owens to develop the Dallas County Housing Trust. She also will work with Owens and Jerry Knox, associate professor emeritus of community and regional planning, on a comprehensive plan for the community of Hartford.

Continuing Education

Haddad is offering four GIS short courses during June and July 2004. This initiative is a collaboration with the Iowa Geographic Information Council (IGIC).

Community Outreach

Tim Borich provided assistance to 10 Iowa communities and counties with planning inquiries or problems. He also had professional outreach opportunities in the Yucatan Peninsula, Mexico. Huntington provided assistance to more than 175 Iowa communities and counties with planning inquiries or problems. Haddad provided assistance to five Iowa communities and counties with planning inquiries or problems.

Interior Design Extension Activities

Lois Warme, associate professor of art and design and interior design extension specialist, provided leadership for the following outreach projects:

- Iowa Central Community College Carpentry Program and City of Fort Dodge universal design house plans for recent quadriplegic and single mother of two daughters.
- Interior design for Harrisdale Rural Learning Center in Cass County.
- Floor plans and interior materials for Iowa Welcome Center proposal for Charles City.
- Identity design and showcase windows for 22 counties for the Iowa Sales Network: A Southwest Iowa Shopping Experience.
- Research and plans for Plymouth County Historical Museum's Period Kitchens project in Le Mars.
- Iowa Department of Health, Lucas Building Destination Project: stair wellness design plans.
- Modest makeover plans for Heartland Senior Center Designer's Challenge project involving Ames High School students.
- Design plans for Greene County Clover Hall, Clay County 4-H Building and Hardin County Community Building kitchen, all on respective county fairgrounds.
- Design plans for county extension offices in Bremer, Mills and Wapello counties.
- Design plans for Thorton Hardware and Iowa Products, Gladbrook Christian Card, Gift and Coffee Shop.
- Design and accessibility plans for Methodist Church in Oakland and Presbyterian Church in Centerville.
- Design plans for Before-and-After School Care Center in Dayton.

In these projects, Warme involved 33 interior design students for the experience of working with real structures, interiors, clients and budgets.

AgrAbility Program

Warme continues to work with the AgrAbility program, funded by ES-USDA. In this program she collaborates with Mary Yearns and Erin Haafke, human development and family studies, to work with case-study families, offering them design plans to better use their existing space and furnishings to best meet the needs of family members with mobility impairments.

Harrisdale Rural Learning Center

Warme has worked with a stakeholder group to investigate turning an existing farm homestead into an economic asset for the community.

Iowa Welcome Center

Warme has provided vision for the Iowa Welcome Center in Charles City, a structure that shares some of the unique resources of the land in the region, houses a meeting room that doubles as an Iowa art gallery for visitors passing through, and provides Extension reception space and offices for the Floyd County Extension Service and Northeast Area Extension Office.

Iowa Sales Network (ISN): A Southwest Iowa Shopping Experience

Warme provided the design concept and leadership to accomplish this effort to promote retail opportunities in southwest Iowa. Showcase windows have been located in 22 participating counties in this ISN program. Warme provided leadership for the showcase windows, the design of the window displays, and the design of the marketing materials—banners and posters—used in the windows, plus community cards and brochures used in Chamber of Commerce and Extension

offices. Nicole Peterson, a junior interior design student, assisted Warme in the design and production of the materials.

Community Outreach

Warme also provided assistance to more than 26 Iowa communities and counties with interior design inquiries or problems. She also had professional outreach opportunities in Rome and elsewhere in Italy.

Landscape Architecture Extension Activities

Christopher Seeger joined the landscape architecture faculty/Design Extension faculty in July 2003 as assistant professor of landscape architecture and ISU Extension landscape architect. Seeger’s major areas of outreach and research will be in recreation and recreation planning. Susan Erickson has been named the PLaCE program coordinator and additionally answers inquiries related to landscape and environment.

Visual and Spatial Survey Builder

Developed by Seeger, this product is designed for use by professional planners, architects and landscape architects as well as community leaders who are engaged in projects that would benefit from public participation in the pre-design, design and decision-making processes.

This application allows the client to select from several customizable game, survey and mapping modules that can be used to collect the public’s input on design proposals, site inventory, visual quality and other community design issues.

The software is a Thin Client Application that runs on the Internet. It does not require that the client or end user store or keep any files on their hard drive. The server-side aspect of the software allows the application to be available 24/7 and provides the most up-to-date modules.

The screenshot shows the 'Step 1. Project Setup' interface. On the left, there are input fields for 'First Name', 'Last Name', 'Email', 'Project Login Name: (Auto Generated) <auto Assigned>', and 'Descriptive Project Title:'. Below these is a text area for 'Provide a brief project description.'. On the right, there is a map with various icons and a 'Comments' box containing the text 'Need to have connection between both lakes'. At the bottom, there is a table with the following data:

ID	Module	Aerial Uplov	Price	GIS Enabled
m01	Photo Inventory 1	No	35	Yes
m02	Inventory 2	Yes	95	No
m03	CMP	No	11	Yes

Below the table, there is a note: 'Site Photos and comments can be located on a static base map (500x500) that has been uploaded by the author or created from imagery located on the Iowa GIS Ortho Photo Server. Collected information can be reviewed online or exported for use with ArcView GIS.' The interface also includes a 'Next-->' button at the bottom right.

Author contact page and module selection list within VASS Builder application.

NIAD Park Improvement Program

Seeger has been involved in the North Iowa Area Development (NIAD) Park Improvement Program, pursuing plans to expand the program statewide and obtain additional funding.

Design for Healthier Communities

Seeger and Erickson are cooperating on the development of programs to stimulate healthier design for Iowa's communities. Responding to the current epidemics of diabetes, obesity, and related health problems which are brought on by physical inactivity, their goal is to provide educational programming and knowledge of key concepts to community and county extension staff, city councils and planning and zoning committees, school children, and related professional organizations. Key concepts will include community walkability, bike-ability, safety, and access to appropriate and attractive recreation and other community facilities. This programming area will involve both research and outreach activities, both to the profession and to communities.

Therapeutic Gardens at Healthcare Facilities

A survey of nursing facilities and assisted living facilities was conducted and results are being analyzed to determine the "state of the art" in therapeutic gardens at Iowa's facilities.

Future plans include designing a therapeutic garden for a central Iowa nursing facility, planning a conference on this topic for nursing home administrators, and preparing a short workshop session for an upcoming statewide conference of administrators.

Community Outreach

Seeger provided assistance to 29 cities, counties, or other nonprofit organizations that had problems or concerns related to landscape or environment. He also had outreach opportunities at professional conferences in Portland, Oregon, and in Germany.

Erickson provided assistance to 54 Iowa individuals, communities, and nonprofit organizations and two out-of-state individuals who had problems or concerns related to landscape or environment. She also engaged in professional outreach activities with two landscape schools in France.

2004 Community Visioning Program

Twelve communities are a part of the Community Visioning program in 2004: Beaman, Britt, Fairfax, Floyd, Jesup, Lost Nation, Montrose, Olin, Shelby, Springville, Tiffin and Volga.

The Beaman project involves proposals to improve downtown Main Street by fixing buildings and adding new sidewalks and street lighting; enhance the County Road T29 corridor with easily maintained roadside plantings and trees for screening purposes; improve the north and south entryways by changing sign locations and adding landscaping; create an improved route through town for Comet Trail; improve the "water tower corner" through landscaping, as it functions as an entry to Main Street; add plantings near city buildings such as fire station and post office; develop more landscaping around school baseball field; add signage throughout town to advertise downtown business district, Comet Trail, baseball field and arboretum.

Proposals for Britt include adding street detail and decorative lighting in the downtown area; enhancing signage throughout the town; and improving the Highway 18 corridor landscape.

Fairfax proposals are to enhance the Highway 151 corridor with easily maintained roadside plants and trees; create north and south entry signs along Highway 151; improve existing city parks and create a new park along the Union Pacific Railroad tracks; extend the Prairie Creek Trail from Cedar Rapids into Fairfax, creating a link between the old and new areas of town; improve the downtown area by resurfacing sidewalks and adding new street lighting and plantings; and add more signage throughout town to advertise the downtown business district.

The Jesup visioning project includes proposed streetscape improvements for Young Street, adjacent to Land of Corn Park and the central business district; and a family of new recognition signs throughout the community to mark its gateways and parks.

Proposals for Lost Nation will address the downtown business district, downtown entryway corridor, cemetery, Gilmore Rustic Park entryway, and community organization recognition signage.

Floyd proposals will address enhancements to Lions Park, downtown streetscaping, trails (the town does not have any at present), land use, river improvements, and transportation issues.

Proposals for Springville include developing community signage; integrating a “village look” into the community; creating an integrated community recreational trail; enhancing the parks; emphasizing Big Creek as a community focal point; improving community linkages (visual and physical); highlighting entryways; and identifying important community sites.

Proposals for Tiffin are to create a connection between Roberts Ferry Road and Ireland Avenue; widen Highway 6 and create a boulevard with center turning lane and median plantings; enhance East Park and create an educational area; and create a “village”-themed downtown.

Volga proposals are to develop a pedestrian trail system that provides access to the area’s natural resources; relocate the dike to extend the floodplain and expand the naturalized area adjacent to the river; extend the existing prairie into surrounding areas; gain accessibility into the Clayton County White Pines for recreational activities; incorporate white pine trees within and along the main entrance area to accentuate the community’s natural heritage; at the four-way intersection, install a new recognition sign that celebrates Volga’s natural resources; make visual improvements to the first two blocks of Washington Street; and remove the damaged bridge and build a low water crossing to improve automobile and pedestrian traffic.

The visioning process for Montrose, Olin and Shelby is ongoing, and no proposal details are available as of the printing of this report.

Impact Assessment of Community Visioning

In order to evaluate the impact of the visioning program on participating communities, steering committee members from past visioning communities were interviewed by telephone. A summary report was produced that presents the results of the evaluation. Additional details may be found under “Completed Projects” on page 5 of this report.

IV. Distance and Continuing Education

WOI Fund for New Initiatives

The College of Design submitted a proposal requesting \$45,000 from the WOI distance-education initiative to participate in an inter-institutional master’s degree in community development over a three-year period. WOI approved \$20,000 in funding for FY 2005, \$15,000 for FY 2006 and \$10,000 for FY 2007.

Each semester, students select on-campus courses that are recorded in the college’s satellite DVD recording studio. College staff and work-study students record, duplicate and mail copies to off-campus students. Figures 5 and 6 show the number of students who enrolled in College of Design

courses that were offered in DVD format over the past three years. The number of undergraduate DVD students exceeded the goals for the past two years (i.e., a goal of 10 undergrads each in FY 2003 and FY 2004 versus actual enrollees of 45). Taking classes in DVD format became so popular that an average of 56 students (combined undergraduate and graduate) enrolled in the last two years. More DVD students enrolled in fall semesters than in spring semesters. An average of five community and regional planning classes are being offered in DVD format per semester.

Collaborative Distance-Education Initiative Grant

The department of community and regional planning, Continuing Education and Communication Services, the Instructional Technology Center, public policy and administration program, and educational administration applied for and received a WOI Distance-Education Grant of \$94,500 over three years to upgrade facilities that support multiple delivery methods of distance education. The goal is to have numerous classrooms on Iowa State University's campus capable of two-way videoconferencing, video streaming, and distributed media (e.g., DVD, CD, videotape).

This proposal provides new equipment for Design 130 to allow IP and ISDN videoconferencing, high-quality synchronous Internet streams, and video-on-demand Internet streams for viewing at any time. This investment will allow the college to distribute its courses quickly and efficiently. Departments also will have access to satellite recording studios across campus based on availability. College of Design students eventually will be able to choose among DVD, streaming video, or videoconferencing delivery options, based on their needs and goals and the format of the courses.

Benefits from Renovations to Design 130

The college completed renovations to Design 130 to make it more user-friendly and to accommodate DVD distance-education delivery. This change allows high-quality, in-house recording of classes, and has led to lower delivery costs and increased revenue over the last year. By replacing ICN delivery with DVD delivery, the college has eliminated ICN fees and reduced expenses by approximately \$14,832 per year, based on an ICN direct cost of \$1,236 per course per semester, 12 courses per academic year.

Cost-Recovery Issues

The greatest challenge now facing the distance-education initiative is cost recovery for cross-enrolled students. The College of Design has experienced a dramatic increase in the number of on-campus students enrolling in off-campus courses. Currently, if an off-campus student enrolls in an off-campus course, the university diverts all tuition less 27 percent to the initiative. If an on-campus student enrolls in an off-campus course, the initiative receives nothing. In AY 2004, 68 students took individual courses through the CRP initiative. Of those students, 44 paid \$23,566 in tuition toward the initiative and 24 students paid no tuition toward the initiative (all tuition went to the university). President Geoffroy has assembled a special committee to study the issue and make recommendations for policy changes in the future.

Last year, the college collected approximately \$4,900 in delivery fees from distance-education students. For the past two academic years, the expenses for DVD media, postage, packaging and labels equaled the total revenues. Next year a slight increase in revenue is expected due to the drop in cost of DVD media.

Last year the college recorded two courses in the Instructional Technology Center's (ITC) recording studio at no cost. Beginning in fall 2004, ITC will charge \$2,000 per class for this

service. To avoid this expense, the college will record all of its distance-education courses in Design 130.

Articulation Agreements with Community Colleges

The CRP department created the “two plus two plus two” transfer plan in 2000 to ease the transfer of community college students into the CRP program. The transfer plan encourages students to take two optional Iowa State distance-education courses—CRP 253 and CRP 270—and to transfer to ISU upon graduation from their community college. These courses will serve to inform students about the study and profession of planning and will help to “jump start” their curriculum before transferring to Iowa State.

The department currently has articulation agreements with all 15 community colleges and community college districts in Iowa. Each semester, the distance-education coordinator sends informational material to administrators and advisers to remind them of the agreements and the opportunity for students to take two Iowa State University distance-education courses via DVD.

Figure 5. Distance Education Enrollment Goal vs. Actual

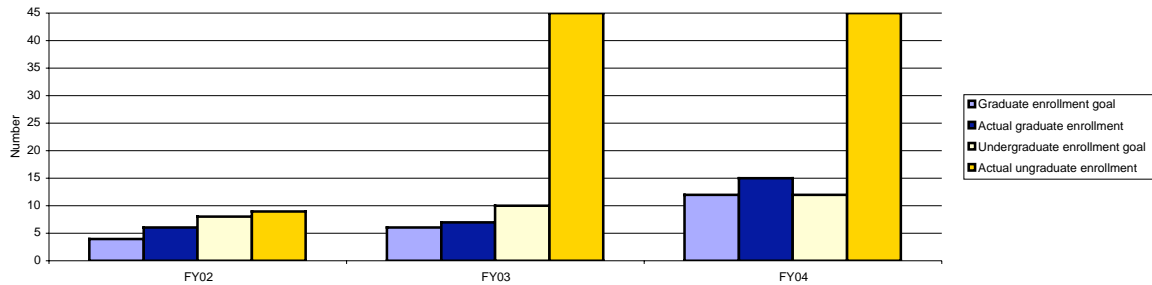
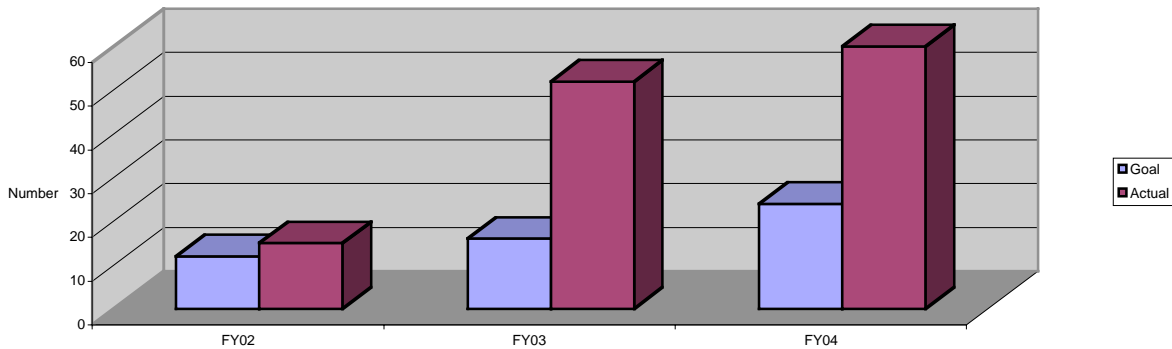


Figure 6. Total Distance Education Enrollment



International Activities

Delegations from Iowa State University's College of Design and the Langzhou Jiaotong University's (LJU) School of Architecture and Urban Planning in Langzhou, People's Republic of China, have visited one another's campuses in the past year. The schools are considering areas of cooperation in both undergraduate and graduate education in architecture and planning. Specifically discussed has been the concept of the "two plus two plus two" program in an undergraduate planning program; in this case, the first two years would be spent on campus at Langzhou and the last two at Iowa State. A distance-education component would include augmenting the planning curriculum at LJU with DVD or streaming-video courses offered through Iowa State University. Discussions toward developing a formal agreement will continue into next year.

Outlook for the Future

IDRO and Design Extension continue to operate in a changing economic and institutional environment. The trend toward needing cost recovery and sponsored projects to sustain the college's goals in research and outreach is likely to continue into the foreseeable future. As budget reductions in base research and extension funding for IDRO have occurred over the past three years, the need for sponsored funding has increased. The college has seen moderate increases in sponsored funds from state and local government resources, and that is expected to continue. Although an increase in the number of proposals submitted by the college was noted in FY 2004, overall participation rates among the faculty are expected to remain about the same.

The college's new GIS lab began to generate revenue in its first year of operation through short-course offerings and small research contracts. Net revenues from distance education courses and continuing education are expected to see moderate increases again next year.

A change in extension personnel occurred as Stuart Huntington, associate professor and extension specialist in community and regional planning, retired in spring 2004. Huntington provided extension programming to literally hundreds of Iowa's communities and thousands of its citizens. The department of community and regional planning and IDRO began searching for a replacement this spring, and an announcement on that search is expected within a month of the printing of this report.

IDRO will continue to provide service to both the college and communities in Iowa. The PLaCE program continues to draw applications and provide opportunities for experiential/service learning. Graduate and undergraduate students employed directly by the institute will number around 10 again next year.

The role and focus of IDRO within the College of Design likely will be under review as a part of the external collegiate review conducted in spring 2005. IDRO likely will play a more critical role as the college's strategic plan calls to nearly double the size of its graduate programs and develop a PhD in design. Both these objectives will not only enhance the collegiate capacity for research, but create increased need for fiscal support.

Appendix: IDRO Activities Worksheet, FY 2004

Type	Status	Date	Faculty/Staff Involved	Department(s)	Title	Cities/Counties	Funded 2004	Amount	Funding Agency
Administrative	Ongoing		Nora Ladjahasan	IDRO	Archive of Iowa cities' and counties' planning documents				
Extension/prof practice			Julia Badenhope	LA	Assistance to communities through conferences, training sessions, one-on-one contacts	Alton, Ayr, Beaman, Belmond, Britt, Denver, DeWitt, Edgewood, Fairfax, Fairfield, Floyd, Fredericksburg, Hampton, Jesup, Lost Nation, Middletown, Montrose, Olin, Shelby, Springville, Tiffin, Volga			
Extension/prof practice			Tim Borich	CRP	Assistance to communities through conferences, training sessions, one-on-one contacts	Ames, Cedar Rapids, Council Bluffs, Des Moines, Estherville, Fort Dodge, Fort Madison, Sioux City, Waterloo; Yucatan, Mexico			
Extension/prof practice			Susan Erickson	LA	Assistance to communities through conferences, training sessions, one-on-one contacts	Ames, Conrad, Coon Rapids, Des Moines, DeWitt, Dubuque, Earlville, Forest City, Fort Dodge, Grimes, Hamburg, Henry County, Hubbard, Hull, Humboldt, Huxley, Iowa City, Jefferson, Luther, Mason City, Mount Pleasant, New Virginia, Oelwein, Red Oak, Runnells, Sergeant Bluff, Solon, Story City, Urbandale, Washington County, Waverly, West Branch, West Point, Williamsburg, Zearing; Durango, Colorado; Omaha, Nebraska			
Extension/prof practice			Monica Haddad	CRP	Assistance to communities through conferences, training sessions, one-on-one contacts	Fort Madison, Iowa City, Mason City			

Type	Status	Date	Faculty/Staff Involved	Department(s)	Title	Cities/Counties	Funded 2004	Amount	Funding Agency
Extension/prof practice			Stuart Huntington	CRP	Assistance to communities through conferences, training sessions, one-on-one contacts	Adair, Adel, Anamosa, Arcadia, Atkins, Benton, Bettendorf, Black Hawk County, Bloomfield, Boone, Bremer, Britt, Buffalo Center, Calhoun, Carroll, Cascade, Cass, Cedar Rapids, Cerro Gordo County, Charter Oaks, Cherokee, Clay County, Clayton, Clinton, Council Bluffs, Crawford, Dallas County, Davenport, Davis, Decatur, Dennison, Des Moines, Dexter, Dickenson County, Dow City, Dunlap, Earling, Eldridge, Elkader, Emmet, Emmetsburg, Estherville, Fairfax, Garner, Greene, Grimes, Grinnell, Grundy, Guthrie Center, Hiawatha, Hubbard, Jefferson, Johnson County, Jones County, Kalona, Linn County, Manly, Mapleton, Marion, Marshalltown, Mason City, Menlo, Monroe, Monticello, Mount Joy, Newton, Okoboji, Osage, Panora, Perry, Pleasant Hill, Polk County, Rake, Redfield, Ricketts, Riverside, Rock Rapids, Rudd, Schleswig, Shelby, Sioux City, Soldier, Spencer, Springville, Story County, Stuart, Swaledale, Tama, Toledo, Union, Ute, Washington, Waterloo, Waverly, Wellman, West Chester, West Okoboji, Westside, Williamsburg, Worth, Worthington, Wyoming, Yale			

Type	Status	Date	Faculty/Staff Involved	Department(s)	Title	Cities/Counties	Funded 2004	Amount	Funding Agency
Extension/prof practice			Christopher Seeger	LA	Assistance to communities through conferences, training sessions, one-on-one contacts	Ackley, Adair County, Allison, Altoona, Ames, Audubon County, Cass County, Cedar County, Clear Lake, Dallas County, Forest City, Franklin County, Goldfield, Guthrie County, Harrison County, Iowa County, Jasper County, Lake Mills, LuVerne, Madison County, Mason City, Mitchell County, Muscatine County, Northwood, Plymouth, Polk County, Pottawattamie County, Poweshiek County, Rudd, Scott County, Shelby County, Swaledale, Titonka, Ventura; Albert Lea, Minnesota			
Extension/prof practice			Lois Warne	LA	Assistance to communities through conferences, training sessions, one-on-one contacts	Ames, Bremer County, Cass County, Centerville, Charles City, Clay County, Dayton, Fort Dodge, Greene County, Hardin County, LeMars, Mills County, Oakland, Wapello County			
Non-research	Completed	5/3/01 – 5/2/04	Tim Keller	LA	Cooperative Agreement for Student Internship		Yes	\$100,000	Iowa Department of Natural Resources
Non-research	Ongoing		Mary Yearns, Colleen Jolly, Steven Freeman, Lois Warne , Cindy Fletcher	Human Development & Family Studies, Industrial Education & Technology, Art & Design	Iowa AgrAbility: Innovations that Work for Home and Farm		Yes	\$147,720	US Department of Agriculture
Non-research	Ongoing	8/1/04 – 7/31/07	Cornelia Flora, Tim Borich	Sociology, CRP	Master's Degree Program in Community Development – Model of Online Collaborative Inter-Institutional Degree		Funded	\$299,993	USDA

Type	Status	Date	Faculty/Staff Involved	Department(s)	Title	Cities/Counties	Funded 2004	Amount	Funding Agency
Non-research	Initiating	7/1/04 – 6/30/07	Steve Padgitt , Alan Jensen, Gerald Miller, Jay Staker, Greg Tylka, Monica Haddad	Extension to Communities, Agronomy, Extension to Youth, Plant Pathology, CRP	Iowa Geospatial Extension Education Program				
PLaCE	Completed	Fall 2003	Dorothy Fowles, Jin Feng, Lisa Fontaine	Art & Design	Cedar Rapids Retail Design Project	Cedar Rapids	Yes*	*Down payment returned; remainder not charged because report not delivered on time	Renaissance Group
PLaCE	Completed	Fall 2003	Tim Borich , Jerry Knox , Frank Owens	CRP, Extension to Communities	McCallsburg Comprehensive Plan	McCallsburg	Yes	\$4,020	City of McCallsburg
PLaCE	Completed	Fall 2003	Dorothy Fowles, Jin Feng, Lisa Fontaine	Art & Design	Mount Ayr Retail Design Project	Mount Ayr	Yes	??	Extension??
PLaCE	Completed	Fall 2003	Susan Bradbury, Peter Butler, Susan Erickson	CRP, LA	Ioway Trail Master Plan	Benton, Iowa, Johnson, Linn, Marshall, Poweshiek and Tama counties	Yes	\$4,600	Iowa Valley Resource Conservation & Development
PLaCE	Completed	9/15/03 – 1/2/04	Tim Borich, Jim Grant	CRP	Sergeant Bluff studio	Sergeant Bluff	Yes	\$2,997	Sergeant Bluff Museum & Historical Society
PLaCE	Completed	Spring 2004	One of Lisa Fontaine's grad students	Art & Design	Clear Project	Clear Lake	Yes*	\$100 (amount will be charged if/when report is prepared)	??
PLaCE	Completed	Spring 2004	Peter Butler, Heidi Hohmann, Ashley Kyber	LA	Earlville Park	Earlville	Yes	\$1,500	
PLaCE	Completed	Spring 2004	Susan Erickson	LA	Green Hills Gazebo	Ames	Yes	\$300	

Type	Status	Date	Faculty/Staff Involved	Department(s)	Title	Cities/Counties	Funded 2004	Amount	Funding Agency
PLaCE	Completed	Spring 2004	Susan Erickson	LA	Hospice of North Iowa	Mason City	Yes	\$800	
PLaCE	Ongoing		Susan Erickson	LA	Humboldt HS CC	Humboldt	Yes	\$600	
PLaCE	Application received		Maruja Torres, Arvid Osterberg, Tim Borich	Art & Design, Architecture, CRP	Ann Smeltzer Charitable Trust Project	Fort Dodge	Pending	\$15,468	Ann Smeltzer Charitable Trust
PLaCE	Application received		Carl Rogers	LA	Fort Madison Rodeo	Fort Madison			
PLaCE	Application received				Greene County Fair Association	Greene County	Pending		
PLaCE	Application received				Hancock Soil & Water Conservation District	Hancock County	Pending		
PLaCE	Application received				Mitchell County Conservation Board	Mitchell County	Pending		
PLaCE	Application received				Thomas Murphy Calendar Company	Red Oak	Pending		
PLaCE	Application received				Worth County Fairground	Worth County	Pending		
Poster display	Completed	1/11/04 – 1/15/04	Julia Badenhope, Sandra Oberbroeckling	LA	Local Voices: Methods of Participation in Corridor Design, presented at Transportation Research Board Annual Meeting in Washington, DC				
Poster display	Completed	3/9/04 – 3/10/04	Julia Badenhope, Sandra Oberbroeckling	LA	Iowa's Living Roadways Community Visioning Program: Professional Landscape Architect Participation in Community Outreach and Participatory Design, presented at SHADE Tree Short Course, Iowa State University				
Research	Completed	7/1/03 – 3/31/04	David Plazak	CRP	I-394 Business Impacts Case Study		Yes	\$48,490	CH2MHILL

Type	Status	Date	Faculty/Staff Involved	Department(s)	Title	Cities/Counties	Funded 2004	Amount	Funding Agency
Research	Completed	10/10/03 – 2/29/04	Michael Miller	Design Administration	Hometown Perry, Iowa museum Web site testing	Perry	Yes	\$7,513	Hometown Perry, Iowa
Research	Completed	7/1/03 – 6/30/04	Jim Miller, Tim Keller	Natural Resource Ecology & Mgmt., LA	Avian Response to Prairie Restoration in Loess Hills of Western Iowa		Yes	\$53,906	Iowa DNR
Research	Completed		Julia Badenhope, Sandra Oberbroeckling, Tim Borich, Nora Ladjahasan	LA, CRP, IDRO	Impact Assessment of Community Visioning	Bancroft, Belmond, Brooklyn, Charles City, Cherokee, Colfax, Creston, Delhi, Denver, DeWitt, Earlville, Edgewood, Emmetsburg, Fairfield, Forest City, Fredericksburg, Grandview, Grinnell, Grundy Center, Hardin County, Hopkinton, Logan, Mediapolis, Middletown, Missouri Valley, Monroe, Montezuma, Mount Ayr, Mount Pleasant, Merville, New Hampton, North Liberty, Oelwein, Parkersburg, Prairie City, Red Oak, Sac City, Sheldon, Shell Rock, Strawberry Point, Tintonka, Toledo, Vinton, Wellsburg, Williamsburg	Yes	\$69,420	Iowa DOT
Research	Completed	7/23/02 – 12/31/03	Chiu-Shui Chan, Riad Mahayni, Ivan Suen, Duane Shinn, Carolina Cruz-Neira	Architecture, CRP, Virtual Reality Applications Center	US-China Cooperative Research: Support for undergraduate research assistants	Beijing, P.R. China	Yes	\$23,420	NSF
Research	Ongoing	5/15/04 – 9/30/04	Clare Robinson	Architecture	Commemorating Violence: Locating Event, Memory, and Identity in Memorial Design Competitions		Yes	\$4,800	Graham Foundation
Research	Ongoing	5/1/04 – 8/31/04	Tom Leslie	Architecture	Things in Their Best Order: The Role of Building Science in Louis I. Kahn's Art Museum		Yes	\$3,750	Graham Foundation
Research	Ongoing	5/20/03 – 6/30/06	David Plazak	CRP	Clinton/Fulton Bridge Study, Phase II		Yes	\$29,998	Howard Green Company

Type	Status	Date	Faculty/Staff Involved	Department(s)	Title	Cities/Counties	Funded 2004	Amount	Funding Agency
Research	Ongoing	5/15/03 – 8/15/04	David Plazak	CRP	State Transportation Plan Update Assistance: Development of a Performance Measures-Based Planning System		Yes	\$100,000	Iowa DOT
Research	Ongoing	4/02/03 – 8/15/04	Francis Owusu	CRP	Institutional Culture and the Performance of Public Institutions: Learning from the “Good Performers”	Ghana, Africa	Yes	\$64,000	World Bank Governance Knowledge Sharing
Research	Ongoing	6/1/03 – 7/15/05	Tim Borich, Nora Ladjahasan	CRP, IDRO	Fort Madison CommunityViz Project	Fort Madison	Yes	\$14,996	Lee County
Research	Ongoing	1/1/04 – 12/1/04	Kate Schwennsen, Margo Hutcheson, Nora Ladjahasan, Heather Sauer	Design Administration, IDRO	College of Design 2004 Alumni Survey		No		
Research	Ongoing		Nora Ladjahasan, Ivan Suen, Tim Borich	IDRO, CRP, Extension to Communities	Altoona and Perry CommunityViz Projects	Altoona, Perry	No		
Research	Ongoing	7/10/03 – 7/15/05	Mimi Wagner	LA	Landscape Change in the Agricultural Landscape		Yes	\$5,745	USDA – US Forest Service
Research	Ongoing	4/30/03 – 4/9/09	James Miller	LA	Prioritizing Metropolitan Open Space Protection in a Changing Landscape		Yes	\$43,099	USDA
Research	Ongoing	9/1/01 – 12/1/04	Tim Keller, Christopher Seeger, Peter Butler, Genevieve Keller, Tim Borich	LA, CRP	Maintaining the Image of Iowa Beyond the Right-of-Way: A Corridor Management Plan for Significant Natural, Cultural and Visual Adjacencies to I-80	Adair, Audubon, Cass, Cedar, Dallas, Guthrie, Harrison, Iowa, Jasper, Johnson, Madison, Muscatine, Polk, Pottawattamie, Poweshiek, Scott and Shelby counties	Yes		Iowa DOT
Research	Ongoing	6/1/01 – 12/1/04	Tim Keller, Christopher Seeger, Peter Butler, Genevieve Keller, Tim Borich	LA, CRP	Lincoln Highway Corridor Management Plan		Yes		Iowa DOT

Type	Status	Date	Faculty/Staff Involved	Department(s)	Title	Cities/Counties	Funded 2004	Amount	Funding Agency
Research	Ongoing	7/1/03 – 12/31/06	Julia Badenhope, Tim Keller, Tim Borich	LA, CRP	Work Order #1: Community Transportation Enhancement Planning, 2003-2004	Beaman, Britt, Fairfax, Floyd, Jesup, Lost Nation, Montrose, Olin, Shelby, Springville, Tiffin, Volga	Yes	\$749,047	Iowa DOT
Research	Proposal submitted	2/1/04 – 5/31/05 (proposed)	Stephen Andrie, David Plazak	Civil, Construction & Environmental Engineering, CRP	Performance Measurement Tool and Reporting System for Research Programs and Projects		Rejected	\$299,998	Transportation Research Board
Research	Ongoing	01/01 – 12/04	Chiu-Shui Chan, Riad Mahayni, Ivan Suen, Duane Shinn, Carolina Cruz-Neira	Architecture, CRP, Virtual Reality Applications Center	US-China Cooperative Research: Utilizing Three-Dimensional Data in a Virtual Urban Environment to Support and Evaluate Planning Decisions	Beijing, P.R. China	Yes	\$120,000	National Science Foundation
Research	Completed	7/23/02 – 12/31/03	Chiu-Shui Chan, Riad Mahayni, Ivan Suen, Duane Shinn, Carolina Cruz-Neira	Architecture, CRP, Virtual Reality Applications Center	US-China Cooperative Research: Support for undergraduate research assistants	Beijing, P.R. China	Yes	\$23,420	NSF
Research	Proposal submitted	11/1/03 – 10/31/04 (proposed)	David Plazak	CRP	Links Between Transportation and Economic Development		Rejected	\$25,000	TRB
Research	Proposal submitted	1/1/05 – 12/1/05 (proposed)	Cindy Haynes, Ann Marie Vanderzanden, Susan Erickson	Horticulture, LA	Identifying Barriers to Providing Quality Outdoor Spaces and Horticulture Programming at Nursing Facilities in Iowa		Rejected	\$10,000	USDA
Research	Funding approval pending		David Plazak	CRP	Acquisition of Access Rights		Pending	\$25,000	TRB
Research	Funding approval pending	10/1/04 – 9/3/07	Ivan Suen	CRP	Simulating Complex Spatial Systems with an Emphasis on Natural Hazards Mitigation to Support Planning Decisions		Pending	\$536,881	National Science Foundation

Type	Status	Date	Faculty/Staff Involved	Department(s)	Title	Cities/Counties	Funded 2004	Amount	Funding Agency
Research	Funding approval pending		Tara Clapp	CRP	Streams for Kids: Involving Iowa Communities in Protecting the Quality of Wading Streams		Pending	\$64,226	Environmental Protection Agency Region 7
Research	Funding approval pending	9/1/04 – 1/21/06	Julia Badenhope	LA	Work Order #2: Community Transportation Enhancement Planning, 2004-2005		Pending	\$776,623	Iowa DOT
Research	Funding approval pending	1/1/05 – 6/1/07	Jim Miller, Lisa Schulte	LA, NREM	Changes in Land Use: Land Cover of the Driftless Area and Implications for Forest Biodiversity Conservation		Pending	\$99,777	EPA Region 7
Research	Funding approval pending	7/1/04 – 6/30/06	Clay Pierce, Kevin Kane	NREM, LA	Development of the Iowa Rivers Information System		Pending	\$74,600	Iowa DNR
Research	Funding approval pending	7/1/04 – 6/30/07	Forrest Nutter, Kevin Kane	Plant Pathology, LA	Safeguarding American Agriculture From new and Emerging Diseases and Pests: A GIS and Web Base		Pending	\$999,966	USDA-NRI