

Designnotes

NEWS FROM THE COLLEGE OF DESIGN

VOLUME 2 | ISSUE 3
FALL 2009

The crane that was visible from central campus is gone. The construction fences are down. The disturbed earth is being transformed with flowers and shrubs. And 20 feet above the ground, Iowa State University's first green roof is doing its job, reducing stormwater runoff, moderating the building's temperature, and converting carbon dioxide to oxygen.

The roof is one component of the King Pavilion, for which the College of Design aims to receive a Platinum rating in the Leadership in Energy and Environmental Design (LEED) program from the US Green Building Council. Other green features of the building include windows that provide natural light and ventilation and wall insulation made from recycled denim.

"The King Pavilion has definitely served as a model not only for the rest of the Iowa State campus but for the state of Iowa in terms of defining how we want green buildings to be built and warranted," said project manager Kerry Dixon-Fox, an architect with ISU facilities planning and management. "This is the first green roof on the campus; it won't be the last."

The King Pavilion will be the home to freshman students in the College of Design's Core Design Program, as well as upperclassmen in professional programs. It was the dream of former College of Design dean Mark Engelbrecht that students from all design programs be integrated in the same work area, creating opportunities for interaction and collaboration.

Construction on the facility began in April 2008 and was completed in June 2009. The first classes will be held there this fall.

The building will be dedicated in a ceremony at 5:15 p.m. Monday, Aug. 24, in the College



The King Pavilion's green roof is sown with 20 varieties of hardy plants atop four layers of special materials that alternately hold and release moisture. This will prevent about 80 percent of rain and melted snow from flowing into the storm sewers as runoff. *Photo by Bob Elbert.*

A MODEL FOR SUSTAINABLE DESIGN KING PAVILION

of Design. The event will include a ribbon-cutting and remarks from lead donor Steve King, among others. This will be followed by a reception and tours of the new facility.

Some of the green features incorporated into the King Pavilion include the following.

Green roof

The facility's green roof is sown with 20 varieties of hardy, colorful plants in a gravel-sand medium, underpinned with three layers

of substrate materials that control moisture flow and protect the roof membrane. Typical flat roofs last 20-25 years, Dixon-Fox said. The hope is to get at least 40 years out of the pavilion roof.

This type of roof should prevent 80 percent of rain and melted snow from flowing to the storm sewers as runoff, Dixon-Fox said. It will also decrease the "heat island" effect, in

(continued on page 2)

KING PAVILION

(continued from cover)



Detention cells beneath permeable pavement, like this courtyard on the northeast side of the pavilion, help slow the flow of rainwater into storm sewers.



Clerestory windows provide ample natural light inside the building. Among other benefits, the green roof helps regulate the interior temperature, keeping it comfortable even on warmer days.



The open studio format will promote interaction and collaboration among students and faculty in different programs and classes. *Photos: top by Heather Sauer; middle and above by Brad Paynter.*

King Pavilion donor data

The College of Design raised \$3.6 million in private support for this project. Of the 2,022 individual donors, 1,673 were ISU alumni. Of those, 1,432 were design alumni.

Alumni Steven and Barbara King provided the lead commitment of \$1.5 million for the new \$6.6 million facility.

The Kings graduated from Iowa State in 1968. Steve received a bachelor of landscape architecture degree, and Barb received a bachelor's degree in food science. In 1971 they founded Landscape Structures, Inc., a children's play equipment company that

which rooftops heat up during the day and in turn heat up a building's interior.

Stormwater management

Detention cells under paved areas and at the base of the triangular hill on the northwest corner of the pavilion will slow surface rainwater flow into local storm sewers.

Native vegetation

The hill on the northwest corner also features native and native-hybrid perennial plants, Dixon-Fox said. "There are species we don't have anywhere else on campus. I think it's a great learning opportunity for landscape architecture and horticulture students to see how various natives can be applied."

The new landscaping also enhances the appearance of the north entrance to the building. "The new entry doesn't feel like the back door to the College of Design anymore. Now there's a much better street presence from the parking lot," Dixon-Fox said.

Water conservation

To help reduce water consumption, restrooms in the King Pavilion have dual-flush toilets, the first installed on the Iowa State campus. The two-button flushing system permits users to manually select the water volume of each flush—less for liquid waste, more for solid.

Natural ventilation

A significant portion of the new building will be ventilated naturally. "We're dehumidifying

the space and we'll be moving air, but it was a very conscious decision to save energy by not fully air conditioning 23,000 square feet of a facility that isn't used during the summer," Dixon-Fox said.

Motion and carbon dioxide sensors in the building will switch blowers on to circulate air when they detect occupants in the studios.

Daylighting

Clerestory windows on both levels of the building as well as the "doghouse"—the sloped section of roof above the central forum space—reduce the need for artificial lighting. Sensors throughout the facility will monitor occupancy and light levels and automatically turn lights on and off as needed.

"The light in the space is amazing. On a sunny or even a slightly cloudy day, you don't need the lights on to work; it's a very bright space," Dixon-Fox said.

The green practices applied in the King Pavilion are already influencing other campus projects. Two buildings under construction—the Biorenewables Research Laboratory and the new chemistry facility—are incorporating on-site cistern retention for rainwater recycling. As a result, Iowa State is leading the state of Iowa in setting new standards for using reclaimed water in buildings.

View recent photos of the King Pavilion at http://images.design.iastate.edu/v/College-Images/king_pavilion_construction.

has continuously pioneered innovative products, processes and safety features. Steve King serves as chairman of the company, and Barb King served as president until her death in March 2008.

In addition to the Kings, the following people and organizations were major contributors to the capital campaign.

Anonymous; **William** (BAR 1972 Architecture) **and Connie Beckman;** **DLR Group;** **Durrant;** **EGA Architects;** **Mark Engelbrecht** (BAR 1963 Architecture); **FRK Architects-Engineers;** **Richard** (BAR 1955

Architecture) **and Barbara** (BS 1955 Human Development & Family Studies) **Hansen;** **InVision Architecture Ltd.;** **Richard O. Jacobson;** **Kresge Foundation;** **Scott** (BAR 1969 Architecture) **and Penny Olson;** **OPN Architects;** **Bryce** (BAR 1971 Architecture) **and Rita Pearsall;** **Pickard Chilton;** **Tom** (BA 1974 Architecture) **and Sally Powers;** **RDG Planning & Design;** **William** (BAR 1965 Architecture) **and Nancy Roe;** **John** (BA 1973 Architecture) **and Joann Rogers;** **Robert** (BS 1947 Architectural Engineering/BAR 1947 Architecture) (*deceased*) **and Marjorie Savage;** **Stan** (BAR 1969 Architecture) **and Dotty** (BS 2000 Marketing) **Thurston**

2009 CHRISTIAN PETERSEN DESIGN AWARD RECIPIENT

BRYCE PEARSALL, FAIA

“I still love to design, but what intrigues me is being a part of helping other people develop their design and leadership skills.”

Iowa State University alumnus Bryce D. Pearsall (BAR 1971 Architecture) will receive the 2009 Christian Petersen Design Award presented by the ISU College of Design.

Pearsall, of Phoenix, will be honored Monday, Aug. 24, with a 7 p.m. presentation in Kocimski Auditorium, 101 Design. The award ceremony will be preceded by a 6 p.m. reception in association with the dedication of the King Pavilion, the newest addition to the College of Design’s facilities.

Established in 1980, the Petersen award is given annually to alumni, staff and friends of the university for distinguished work that encompasses personal achievements, exceptional support and extraordinary service advancing the design and art professions. It is named for the noted artist who was Iowa State’s sculptor-in-residence from 1934 to 1955.

Pearsall has distinguished himself across the broadest range of leadership, management and design responsibilities. A managing principal of DLR Group since 1986, he has been central to its growth into one of the nation’s largest and most successful architecture and engineering firms, with offices in 14 cities. In 2009, DLR Group ranked eighth in *The Architect 50*, *Architect’s* list of the top 50 U.S.-based architecture firms.

Pearsall is a Fellow of the American Institute of Architects, national chair of the AIA Large Firm Roundtable, and a LEED Accredited Professional. His project leadership and design work have appeared in national and international professional publications, including *Architectural Record*, *Architecture*, *American School and University*, *Architekt + Wettbewerbe* (Stuttgart), *Arizona Business*, *Corrections Today*, *Education Facility Planner*, *Learning by Design*, *L’Industria Delle Costruzioni* (Rome), *New York Times*, *Progressive Architecture*, and *USA Today*.

Pearsall joined DLR in Omaha shortly after graduation from Iowa State in 1971. He relocated to Phoenix in 1979 and became managing principal in 1986. In that time the firm has grown from about 40 people in two offices in the Midwest to about 500 in 14 offices nationwide.

“I have been fortunate to design some good buildings and have received a number of awards personally for work done in the firm. I still love to design and still fiddle with it now and then,” Pearsall said with a chuckle.

“But having had several different types of careers within the firm, what intrigues me is being a part of helping other people develop their design and leadership skills, helping them have opportunities to grow and contribute.”

DLR joined the American Institute of Architects Large Firm Roundtable in 1997. Pearsall became vice chair of the executive committee in 2002 and was elected chair in 2008. In this highly visible role, he has focused on cultivating a mutually supportive relationship between the practice of architecture and the nation’s schools of design, including the ISU College of Design. He also promotes collaboration and idea sharing among the member firms practicing around the world.

In addition to excelling in his professional life, Pearsall has provided energetic leadership to both the ISU architecture department and the College of Design in multiple service roles. He is the chair of the college’s Advancement Council, and a past member and chair of the Architecture Advisory Council.

Through his involvement on the Advancement Council, Pearsall played a key role in the realization of the King Pavilion. DLR Group has a named space—the DLR Group



Bryce Pearsall, FAIA, managing principal of DLR Group, will be the 37th recipient of the Christian Petersen Design Award since it was established in 1980. *Contributed photo.*

Suite—in the facility, together with Bryce and Rita Pearsall.

Pearsall served on the ISU College of Design Dean Search Committee in 2008-09. In 2003, he received a Design Achievement Award from the college. He is a member of the Order of the Knoll, Iowa State’s most prestigious donor recognition society, and a life member of the ISU Alumni Association.

“I think it’s important for professionals to get involved with their alma mater or with any educational institution. I always enjoy meeting the students and finding out what is happening in their academic lives, what they are working on, what is being learned and taught,” he said.

Read more of this story at www.design.iastate.edu/stories.php?ARTICLEID=286.

COLLEGE OF DESIGN HOSTS ALUMNI EXHIBITION 30 AND BEYOND

Thirty years ago, Iowa State University's College of Design opened its doors to thousands of students pursuing their passion to create. Now, under the direction of a distinguished guest curator, the college will exhibit 30 pieces of alumni creative work.

"30 and Beyond: College of Design Alumni Exhibition," curated by David Revere McFadden, chief curator at the Museum of Arts and Design in New York, will be open Aug. 3 to Sept. 26 in Gallery 181, College of Design. A reception and a lecture by McFadden will be on Monday, Aug. 24. All events are free and open to the public.

The 30 works in the exhibition range from fiber and metals to award-winning buildings and a 1,347-acre park. McFadden selected the works from 362 submissions by 206 alumni of the college and its predecessor programs. Graduation dates of the exhibitors extend

from 1958 to 2007, although all work submitted must have been completed since 2003. One submission from each entrant is included in an accompanying online show at www.design.iastate.edu/30/alumnishow.php.

McFadden, who has organized more than 120 exhibitions on decorative arts, design and craft, chose works "that were exceptional and memorable," he said. He did not consider the entrant's discipline or graduation date.

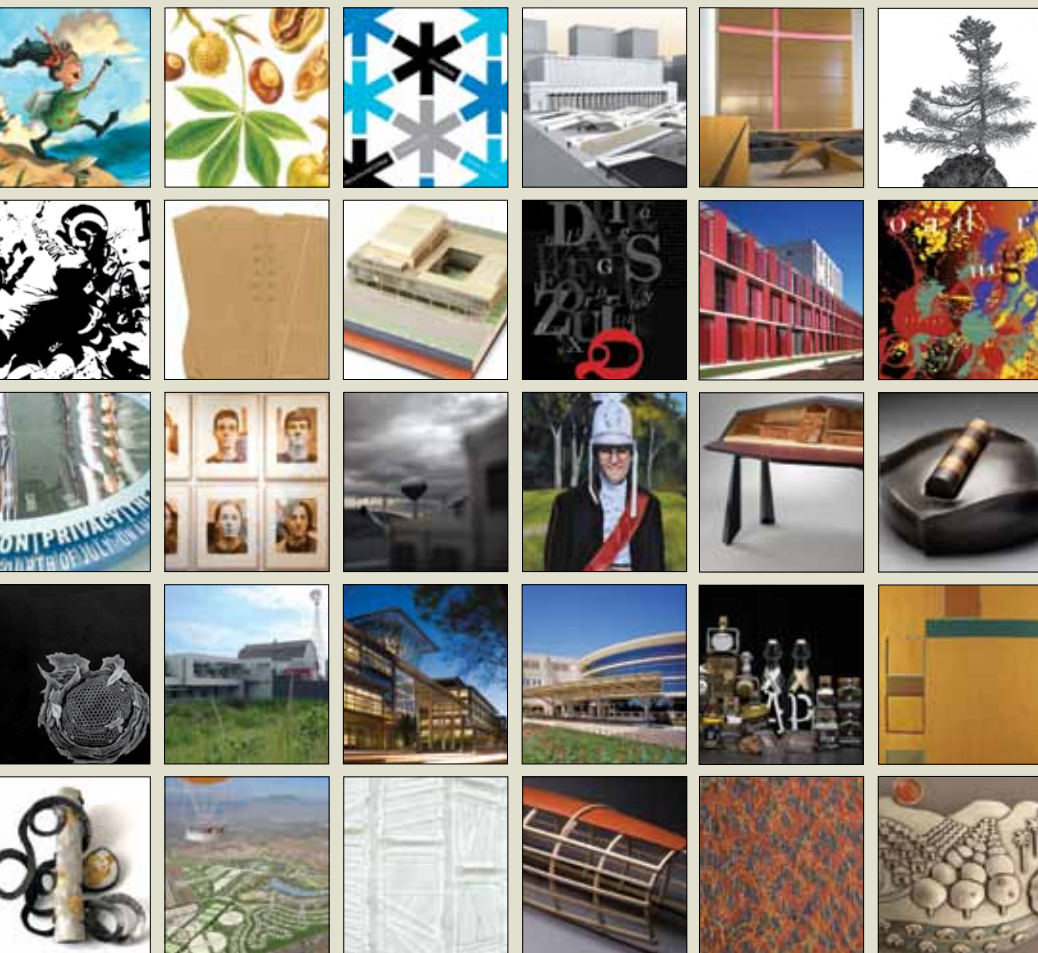
"The 30 entries presented here encompass five broad themes that illuminate the design process and the ways in which design can enhance, enrich and enliven our environment," McFadden said.

The exhibition's five themes, which McFadden said "help focus attention on key aspects of the array of distinctive designs," include "Information, Language and Narrative;"

"Nature;" "Domestic Structures: Furniture, Fiber and Form;" "Space and Architecture;" and "Memory." The alumni whose work is in each group are listed in the box below.

"30 and Beyond: College of Design Alumni Exhibition" will be open 9 a.m. to 4 p.m., Monday through Friday, Aug. 3 to 21. Beginning Aug. 24 until Sept. 26, it will be open 9 a.m. to 5 p.m. Monday, Tuesday, Wednesday and Friday, and 9 a.m. to 8 p.m. on Thursdays. On the Sundays of Aug. 30, Sept. 13 and 20, the exhibition will be open 1 to 4 p.m.

The public reception will be 6 to 7 p.m. Monday, Aug. 24, in Gallery 181 and the Lyle E. Lightfoot Forum, College of Design. McFadden's lecture, "The Blur Zone: Art, Craft and Design Today," will be at 7:30 p.m. in Kocinski Auditorium, 101 Design, following the presentation of the Christian Petersen Design Award at 7 p.m.



GALLERY 181 EXHIBITION

INFORMATION, LANGUAGE AND NARRATIVE

Derek J. Anderson, Michael A. Braley, Aaron J. Evanson, Sean M. Heisler, Soo C. Hostetler, Tina L. (Roether) Henderson, Jason L. Schulte

NATURE

Dean W. Biechler, Meredith A. Chambers, Julie Niskanen, Christine Simpson Forni, Duane A. Weber, Ahlene (Marshall) Welsh

DOMESTIC STRUCTURES: FURNITURE, FIBER AND FORM

Cameron T. Campbell, Christopher J. Martin, Joe Muench, Meredith L. Sewell, Sally A. (Johnson) Smith, Jacob E. Snowbarger

SPACE AND ARCHITECTURE

Michael J. Cady, Rainer Hofmann, James M. Patchett, Jon Pickard & William Chilton, Robert A. Pratt, Ken Smith

MEMORY

Peter P. Goché, BJ Krivanek, Qimin Liu, Jason Bailer Losh, Maria Lux

ISU SOLAR DECATHLON TEAM READIES FOR COMPETITION

INTERLOCK HOUSE

INTERLOCK OPEN HOUSE

2-5 p.m. Saturday, Aug. 29, 2009
1220 Southern Hills Dr., Ames

2009 SOLAR DECATHLON DATES

Oct. 8-16 Teams compete in 10 contests
Oct. 9-13 Houses are open to the public
Oct. 15-18 Houses are open to the public
Oct. 19-21 Teams disassemble their houses

TOURS

Washington, D.C.-area alumni and friends are encouraged to visit the solar village on the National Mall between Oct. 9 and 18. The Iowa State team would love to see you there! The 20 houses in the competition will be open for public tours 11 a.m.-3 p.m. Monday-Friday, 10 a.m.-5 p.m. Saturday and Sunday. Please note that all homes will be closed Wednesday, Oct. 14.



The central component of the Interlock House—both literally and conceptually—is the enclosed sun porch (shown here with exterior wall open), an indoor/outdoor space with southern exposure that collects heat throughout the day. Depending on the season, this heat will be distributed via a series of vents back into the house, or doors on the north side of the house as well as the NanaWalls which define the porch can be opened to allow cross ventilation. The house will carry 4 kilowatts of photovoltaic capacity, in rooftop modules (shown being installed at the end of July) and in sun-tracking louvers over windows and skylights. *Photo by Heather Sauer.*



Several College of Design classes created furniture (one example above), ceramics—including table settings and decorative window surrounds—light fixtures and bird houses for the Interlock House. *Photo by Heather Sauer.*



To ensure that artificial light is not required during the day, the house has south, east and north-facing windows. The north clerestory windows allow ambient light to enter all interior spaces. *Rendering by Jason Arnold.*

With just over two months to go until the US Department of Energy's 2009 Solar Decathlon competition, members of the ISU Solar Decathlon Team are hard at work preparing for the October event.

Construction of the 800-square-foot Interlock House, Iowa State's entry in the fourth US DOE Solar Decathlon, moved from a warehouse to an outdoor site in April. While about 75 students from a dozen departments have been involved in the overall project, a core group of six students (one from architecture, the others from construction and mechanical engineering) has spent the summer months framing, roofing, siding, and installing mechanical and electrical systems. At the end of July, they began installing the rooftop photovoltaic array.

Remaining work includes installation of the thermal system, lighting, cabinetry

and appliances, painting and other interior tasks. The goal is to complete the house by the end of August so that all systems can be tested and tweaked in September. Then the house—which is constructed as three separate modules—will be taken apart, loaded onto semis and transported to Washington, D.C., where it will be reassembled on the National Mall.

The public is invited to visit during an open house at the construction site in Ames on Saturday, Aug. 24. This will be the final opportunity to view the Interlock House and meet team members before they leave for the competition.

Learn more about the Interlock House at www.solar.iastate.edu. For more on the US DOE's 2009 Solar Decathlon, including the 10 individual contests in which teams will be judged, see www.solardecathlon.org/about.cfm.

2009 ALUMNI AWARDS

DESIGN ACHIEVEMENT AWARD

The Iowa State University College of Design established this award in 1988 to recognize outstanding mid-career creative and professional achievements of alumni in the fields of architecture, art and design, community and regional planning, and landscape architecture.

Qun Dang (MAR 1999 Architecture),



Beijing, is a principal of MAD Studio and directs development of several ongoing projects, including the Absolute Towers in Canada (winner in a 2006 international design competition) and the Sinosteel International Plaza and Erdos Museum, both in China.

Prior to joining MAD in 2006, Dang worked for Perkins Eastman in Pittsburgh and USA Architects in Newark, N.J. She has taught at the Pratt Institute and Iowa State University and has authored several articles in professional journals, including *Architectural Digest*, *Architecture and Culture* (China), *Architecture and Urbanism* (Japan), and *Architektura i Biznes* (Poland).

Dang's work has appeared in numerous exhibitions, most recently, Christian Dior and Chinese Artists, Beijing; the 11th International Architecture Exhibition, Venice; China Design Now, London; and On Cities, Stockholm.

These five College of Design alumni will be honored during Homecoming at the ISU Alumni Association's 78th annual Honors & Awards Ceremony on Friday, Oct. 16. The public event will begin at 1:30 p.m. in Benton Auditorium, Scheman Building. View complete bios of the 2009 honorees and past recipients at www.design.iastate.edu/alumni.php.

Todd Piper-Hauswirth (BFA 1991 Graphic Design), Minneapolis,



is an associate partner and director of the Minneapolis office of VSA Partners, which counts 20 of *Fortune's* "50 Most Admired Companies" as clients. He is involved in the direction and development of the

firm's brand identity and packaging design portfolio that includes Best Buy, Nike, Target, IBM, Cargill, GE, Converse and Coca-Cola.

Prior to opening VSA Minneapolis, Piper-Hauswirth was a senior designer with Hard Werken Design in The Netherlands and spent 13 years as partner and creative director of CSA Design Co., named "One of the Top Ten Most Influential Design Firms" in 1995.

Piper-Hauswirth has earned over 200 awards from such publications and exhibitions as *Ad Week*, *AIGA*, *Communication Arts*, *Graphis*, *HOW, ID*, *Print*, *STA100*, *The One Show*, *Type Directors Club*, *Museum of Modern Art*, the *Cooper-Hewitt*, *National Design Museum*, and the *Institute of Contemporary Arts – London*.

Lynn M. Ross (BS 1999 Community &



Regional Planning), AICP, Silver Spring, Md., has directed state and local initiatives for the National Housing Conference and the Center for Housing Policy in Washington, D.C., since 2007. She is responsible for developing and

implementing educational, outreach and technical assistance strategies to strengthen state and local housing policies. Most recently, she organized the "Solutions for Working Families: 2009 Learning Conference on State and Local Housing Policy" in Chicago in June.

Ross previously managed the American Planning Association's Planning Advisory Service in Chicago, where she directed a staff of seven to provide planning research to over 1,200 agencies, consultants and educational institutions. While with the APA, Ross also was the assistant editor of *Planning and Urban Design Standards* (John Wiley & Sons, 2006).

Ross received a Master of Regional Planning degree from Cornell University in 2001. She is a member of the APA and the American Institute of Certified Planners, and serves on the ISU Department of Community and Regional Planning's Planning Advisory Council. She is a life member of the ISU Alumni Association.

Curt Schreiber (BFA 1991 Graphic Design),



Winnetka, Ill., is vice president and director of the Chicago-based design agency VSA Partners, Inc. Since 1991, Schreiber has directed the growth of VSA from a staff of 15 to a cross-disciplinary firm of 120. He continues to shape

the firm's long-term strategy while providing creative leadership and management in the Chicago and New York offices.

Schreiber directs brand identity and corporate communications projects for such clients as IBM, Cole Haan, and Nike. Past notable clients include Coca-Cola, Converse, General Motors, Harley-Davidson and Target.

Schreiber's work has been recognized by more than 200 international design and communications organizations, publications and competitions and is part of the permanent collection of the US Library of Congress.

He is a member of the Museum of Contemporary Art, The Art Institute of Chicago and the American Institute of Graphic Arts.

OUTSTANDING YOUNG ALUMNUS AWARD

The Iowa State University Alumni Association established this award in 1968 to recognize ISU alumni, age 40 and under, who have excelled in their professions and provided service to their communities.



In a society making so many demands upon children's attention, **Derek J. Anderson** (BFA 1991 Art & Design), Minneapolis, has captured and nurtured it.

Anderson illustrated the *New York Times* best-selling children's book *Little Quack*. Many of his publications have appeared on national "best book" lists, and *Little Quack* has been translated into nine languages. He has written and illustrated four

original books, including *Romeo and Lou Blast Off*, named one of the best books of 2007 by *Parent & Child* magazine.

Little Quack and *Little Quack's Bedtime* both received the National Parenting Publication Gold Award, and *Little Quack* and *Little Quack's New Friend* received the International Reading Association/Children's Book Council Children's Choice Award.

Anderson works with children, as well as other writers and artists, to share his expertise and contagious joy. He is a member of the Society of Children's Book Writers and Illustrators and the Children's Literature Network.

Two illustrations from Anderson's latest book, *Ballyhoo Bay* (written by Judy Sierra), are featured in the College of Design alumni exhibition "30 and Beyond."

COMING EVENTS

Find more information on these and other events at www.design.iastate.edu/calendar.php.

AUGUST

- 24 King Pavilion Dedication
- 30 and Beyond Alumni Exhibition Reception
- Christian Petersen Design Award Presentation
- Lecture: David McFadden, Guest Curator, 30 and Beyond
- 29 ISU Solar Decathlon Open House

SEPTEMBER

- 10 ReLationShips: From Our Roots Exhibition Reception
- 11 Architecture Premiere
- College of Design Annual Golf Tournament
- 26 Cyclone Family Weekend Open House
- 30 and Beyond Alumni Exhibition Closes

OCTOBER

- 10 ISU Design West Tailgate: ISU Cyclones vs. Kansas Jayhawks
- 12-17 Homecoming Week
- 16 ISU Alumni Association's 2009 Honors & Awards Ceremony
- 22 P.H. Elwood Lecture in Landscape Architecture: Kate Orff

ABOUT DESIGNOTES

Designotes is published three times per year (spring, summer, fall) by the Iowa State University College of Design and mailed to 13,000 alumni and friends.

Editors: Heather Sauer, Charles Sauer

Writers: Heather Sauer, Teddi Barron

Graphic Designer: Ashley Oelmann

SIGN UP FOR E-BLAST

Stay current on news and events in the College of Design! Share your e-mail address with us to receive the monthly Designotes electronic newsletter. This message contains information on alumni, faculty, students, programs and activities that may be of interest to you. The e-blast is sent the second Thursday of every month in HTML and text-only formats.

CONTACT US

We encourage correspondence from alumni and friends via our online form at www.design.iastate.edu/alumniinfo.php, via email to isucod@iastate.edu, or mail to the college:

Designotes

134 College of Design
Iowa State University
Ames, IA 50011-3091

Iowa State University does not discriminate on the basis of race, color, age, religion, national origin, sexual orientation, gender identity, sex, marital status, disability, or status as a U.S. veteran. Inquiries may be directed to the Director of Equal Opportunity and Diversity, 3680 Beardshear Hall, (515) 294-7612.

FSC logo
goes in here



COLLEGE GETS LOAN FOR ENERGY CONSERVATION

As part of the planning for the King Pavilion addition to the College of Design, designers also developed several proposals for energy savings in the existing college building, which is used around the clock all week. One of the recommendations focused on lighting and is the basis of a two-phased proposal approved by Iowa State University's Live Green revolving loan fund.

The Live Green fund provides interest-free loans for university projects that promote energy conservation and sustainability and provide a return on the investment. Each loan phase must be repaid within five years, preferably from energy savings achieved.

Over the next two years, the Design College project will add occupancy sensors to all classrooms, computer labs, and storage and

conference rooms; and retrofit classrooms, computer labs, faculty and departmental offices, shops and restrooms with high-performance "Super T8" fluorescent lamps and electronic ballasts. The project also will add special "daylight" controls in studios and classrooms with exterior windows that will make better use of natural light.

The estimated project cost is \$293,000. The college received some of the loan funds in FY09 and will receive the remainder in FY10. The expected annual savings is \$46,000, with loan repayment of the two phases anticipated in a little over six years.

In addition to the lighting project, the college will help conserve water by replacing toilets and urinals in its restrooms with new ones, like those installed in the King Pavilion, that

use less water to flush waste. Funding for this project will come from private sources.

Another proposal involves saving energy on the heating and cooling of the original college building. The new system would re-use existing ductwork, but the air handlers would be split to change the amount of outside air being circulated.

Variable air volume boxes would be installed in each office and studio space so that the system could respond with ventilation air to spaces as they demand it, based on occupancy sensors and carbon dioxide monitors. The current building system runs constantly to all spaces, even if they are unoccupied.

It is estimated that this change could pay back in energy savings in 10 to 12 years. The college is looking at ways to fund this project.



College of Design
Iowa State University
134 College of Design
Ames, IA 50011-3091

NONPROFIT ORG.
U.S. POSTAGE PAID
AMES, IA
PERMIT NO. 200